



ANJUMAN KHAIRUL ISLAM'S
POONA COLLEGE
OF ARTS, SCIENCE & COMMERCE

CAMP, PUNE-411001



INFRASTRUCTURE AND PHYSICAL FACILITIES



Geotagged Photos



Our Vision

Pursuit of Knowledge in the Service of Humanity

Our Mission

To serve as a light house amidst all shortcomings and setbacks by defying complacency, we endeavor:

- *To impart education to students belonging to all strata of society irrespective of caste, gender, colour, creed & religion.*
- *To uplift the deprived and academically weak students by empowering them with knowledge.*
- *To develop moral, ethical, social and aesthetic values amongst our students.*
- *To help, equip and develop essential qualities to face the challenges posed by the turbulent currents of change.*
- *To inculcate respect for humanity and to fortify the ideals of perseverance, dedication, quality consciousness and excellence.*
- *To prepare citizens who could grow to be competent and significant contributors for the betterment of mankind through their profession.*



**M
V
I
S
I
O
N**



A.K.I's
P
O
N
A
C
O
L
L
E
G
E
O
F
A
R
T
S
S
C
I
E
N
C
E
&
C
O
M
M
E
R
C
E



Front view



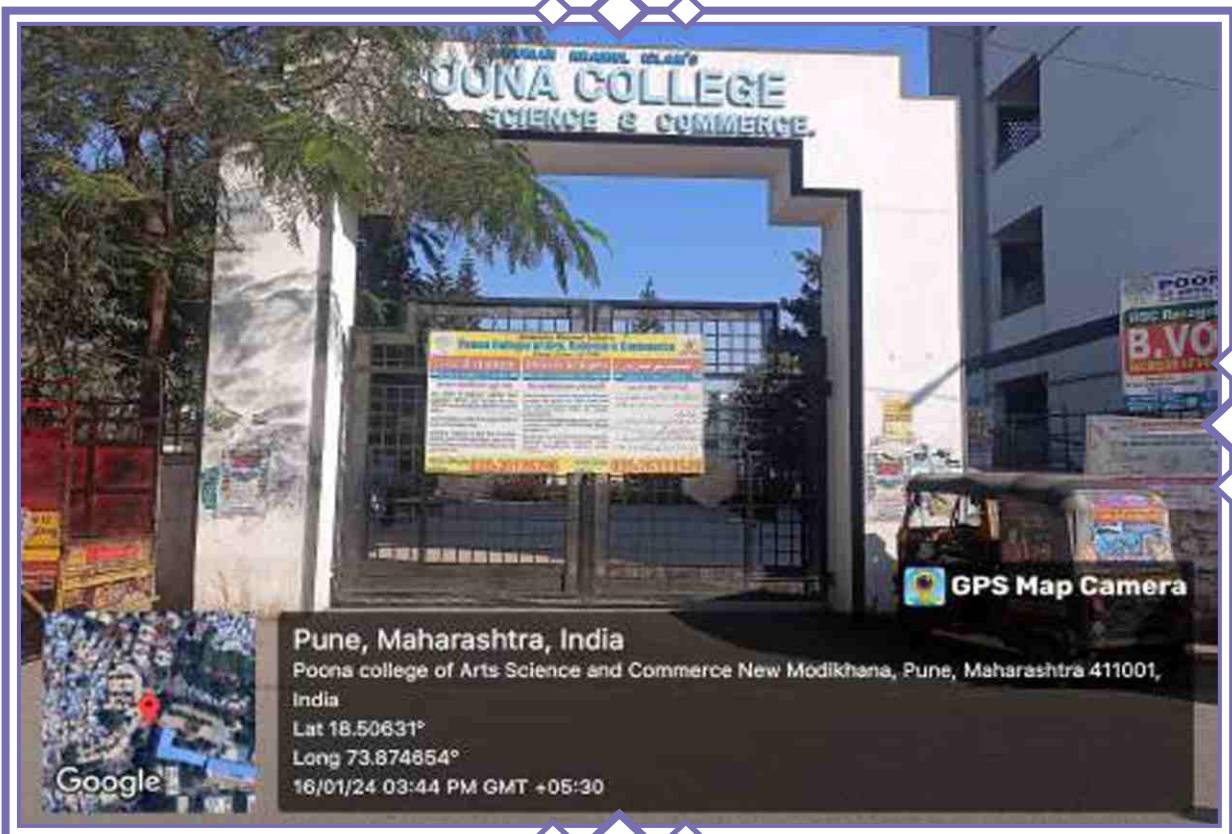
Open Air Auditorium



Horticulture Garden



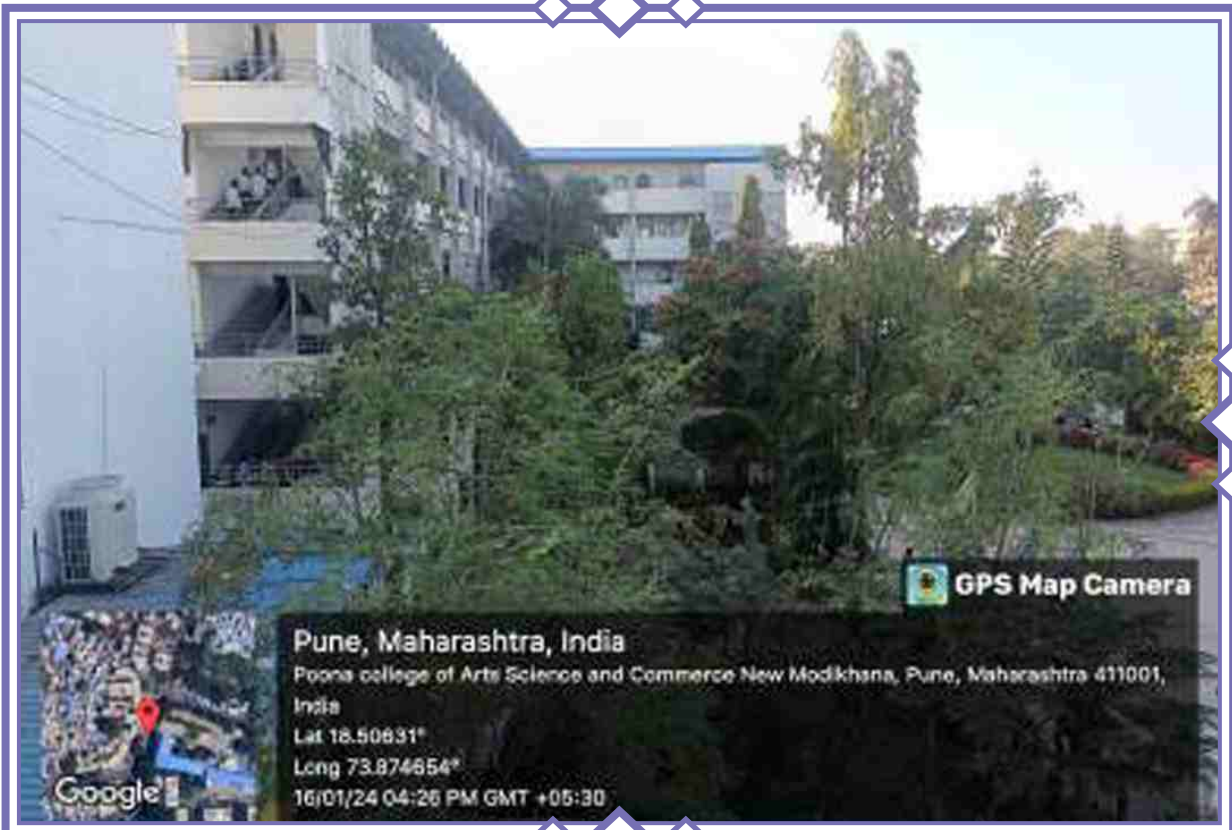
Horticulture Garden





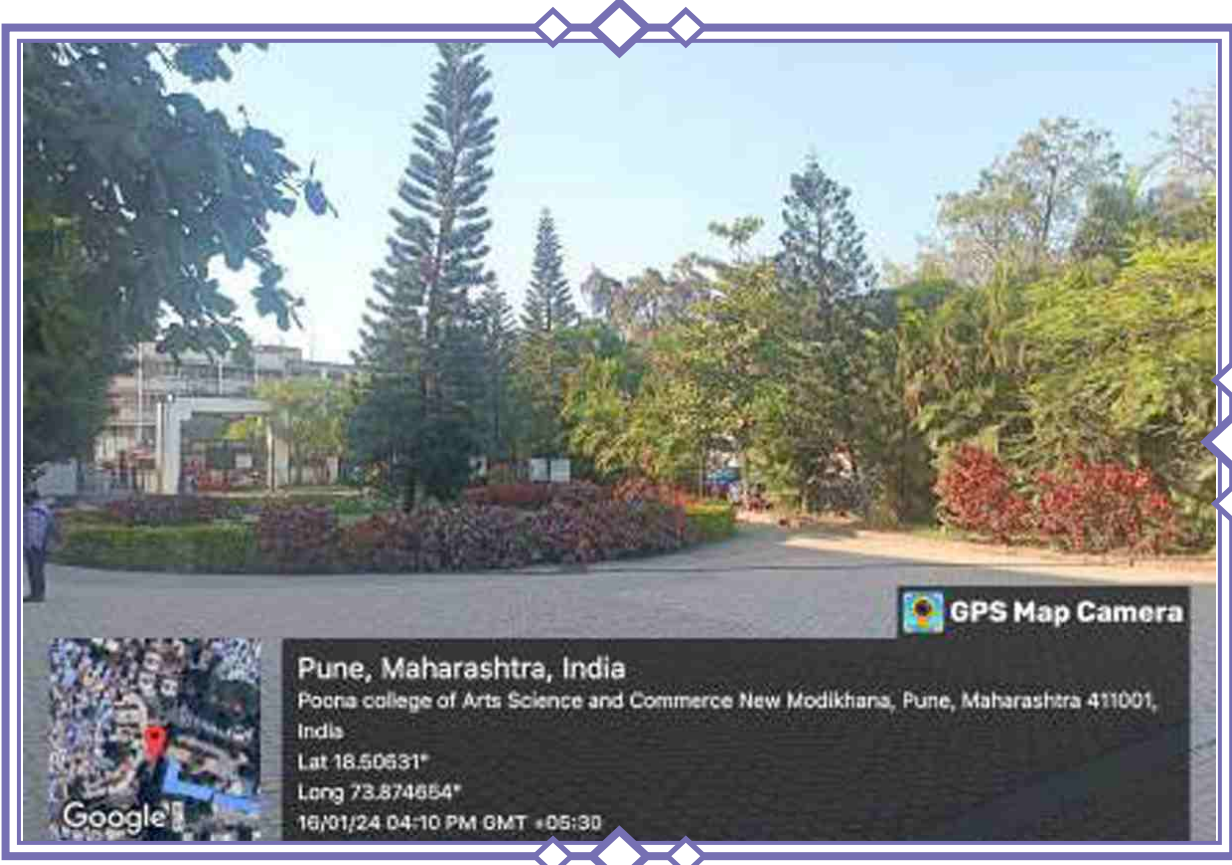








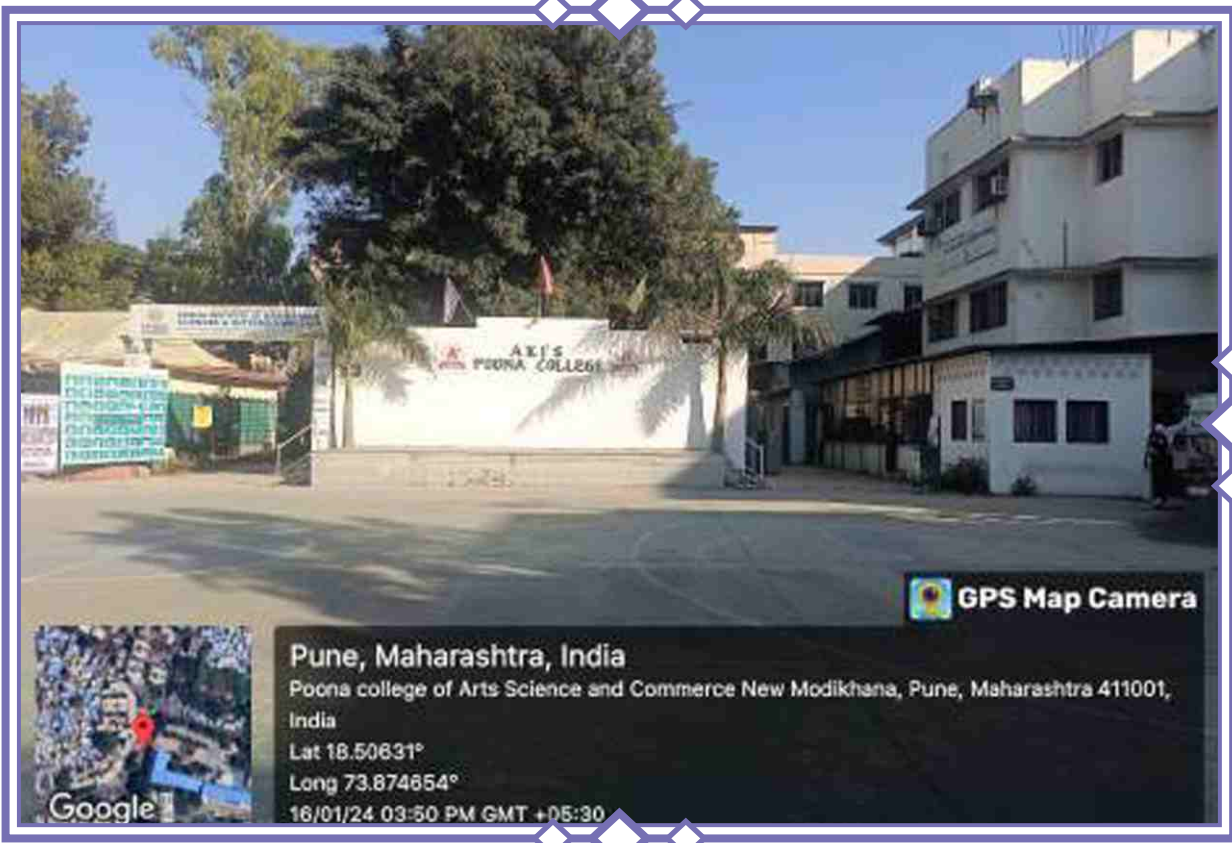
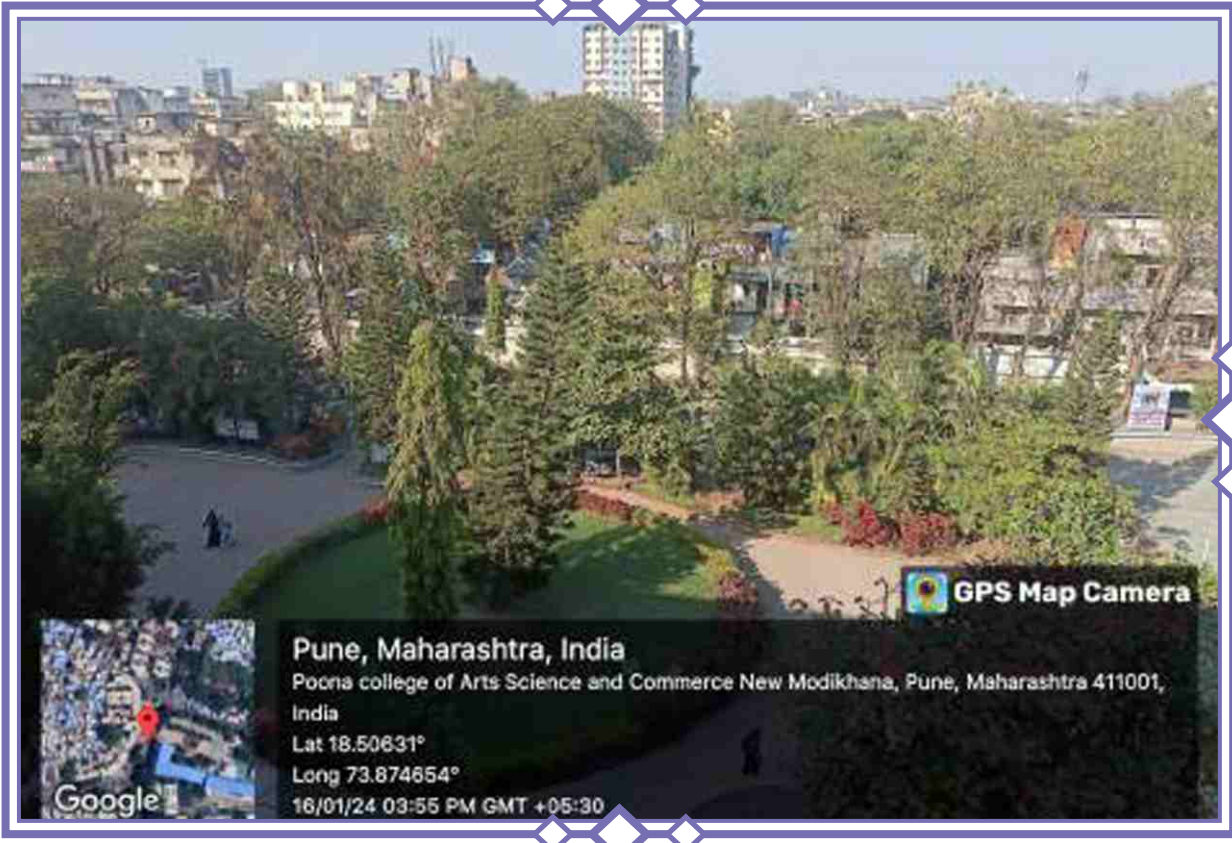


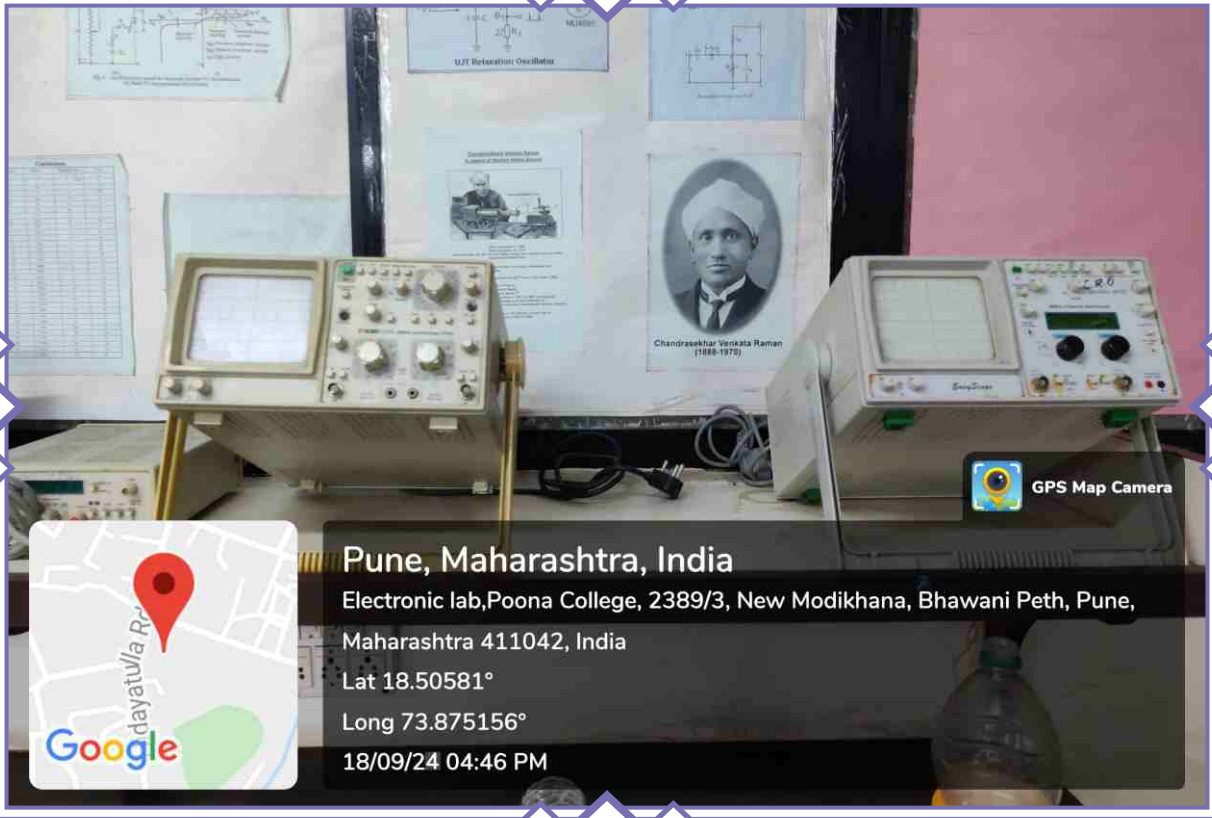












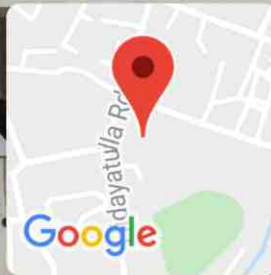
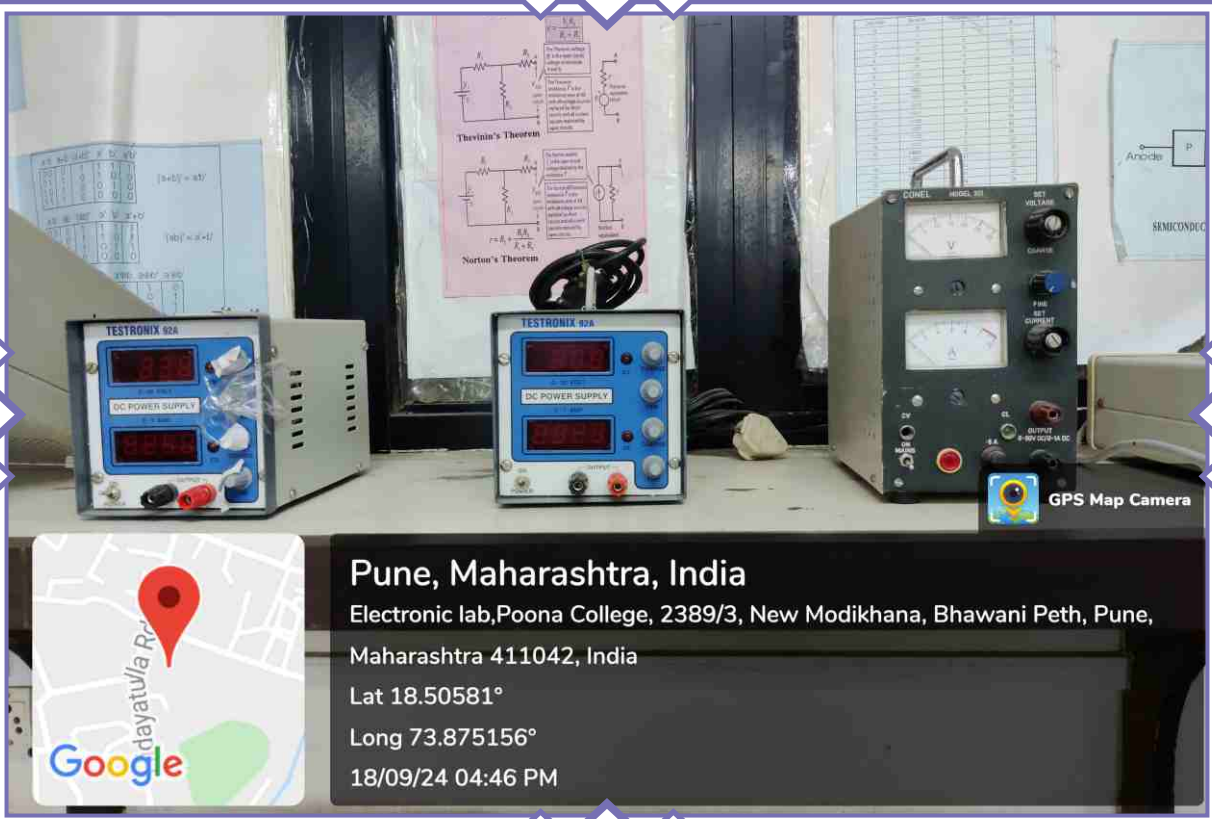
Pune, Maharashtra, India

Electronic lab, Poona College, 2389/3, New Modikhana, Bhawani Peth, Pune, Maharashtra 411042, India

Lat 18.50581°

Long 73.875156°

18/09/24 04:46 PM



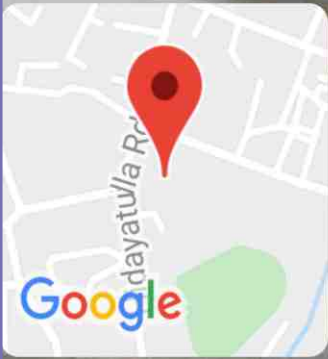
Pune, Maharashtra, India

Electronic lab, Poona College, 2389/3, New Modikhana, Bhawani Peth, Pune, Maharashtra 411042, India

Lat 18.50581°

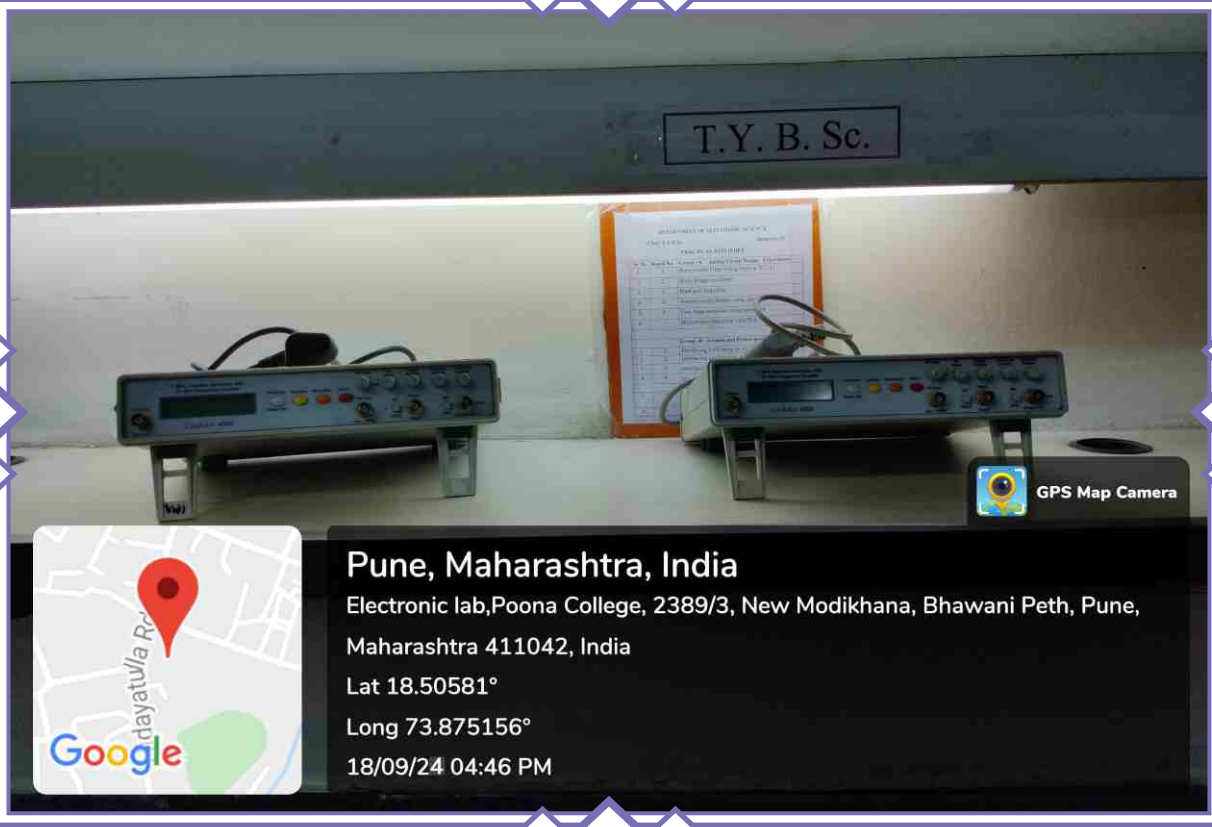
Long 73.875156°

18/09/24 04:46 PM



Pune, Maharashtra, India
Electronic lab, Poona College, 2389/3, New Modikhana,
Bhawani Peth, Pune, Maharashtra 411042, India
Lat 18.50581°
Long 73.875156°
18/09/24 04:44 PM





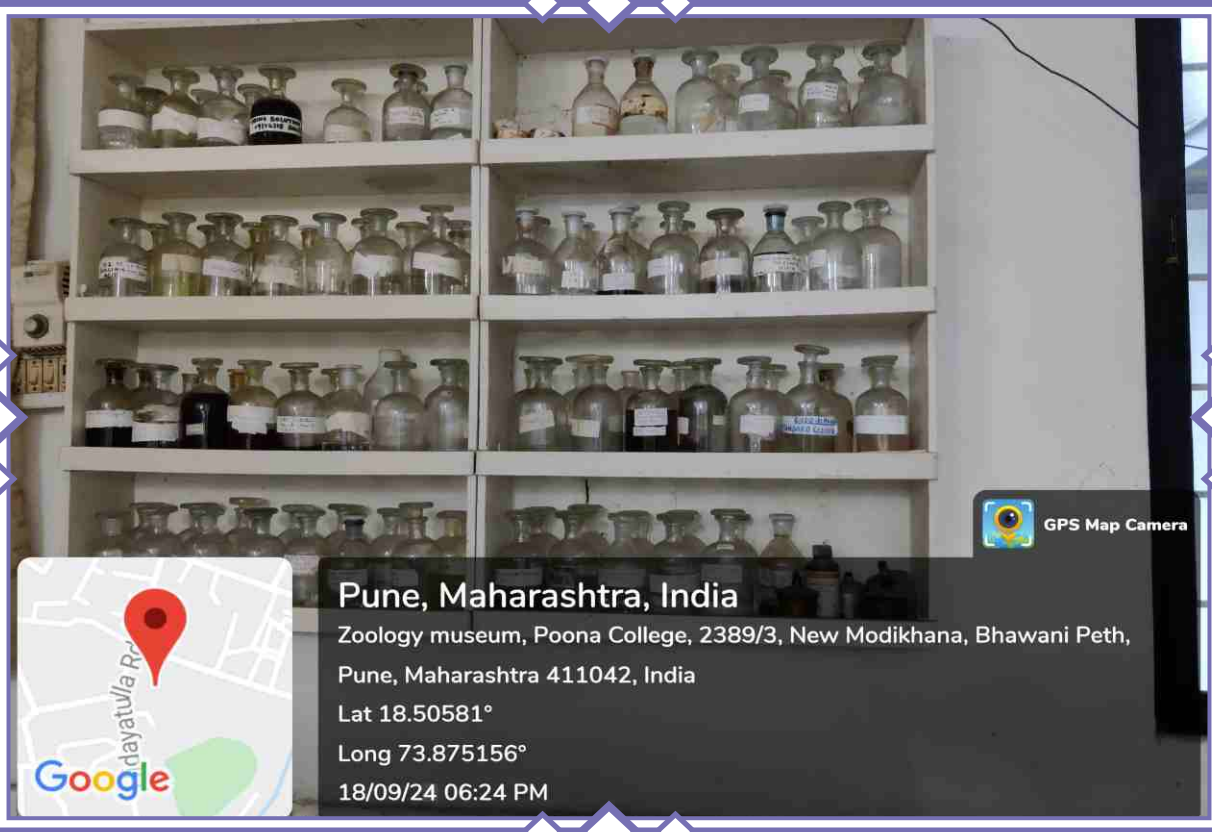
Pune, Maharashtra, India

Electronic lab, Poona College, 2389/3, New Modikhana, Bhawani Peth, Pune, Maharashtra 411042, India

Lat 18.50581°

Long 73.875156°

18/09/24 04:46 PM



Pune, Maharashtra, India

Zoology museum, Poona College, 2389/3, New Modikhana, Bhawani Peth, Pune, Maharashtra 411042, India

Lat 18.50581°

Long 73.875156°

18/09/24 06:24 PM



Pune, Maharashtra, India

Zoology museum, Poona College, 2389/3, New Modikhana,

Bhawani Peth, Pune, Maharashtra 411042, India

Lat 18.50581°

Long 73.875156°

18/09/24 06:22 PM



GPS Map Camera



Pune, Maharashtra, India

Zooloogy museum, Poona College, 2389/3, New Modikhana,

Bhawani Peth, Pune, Maharashtra 411042, India

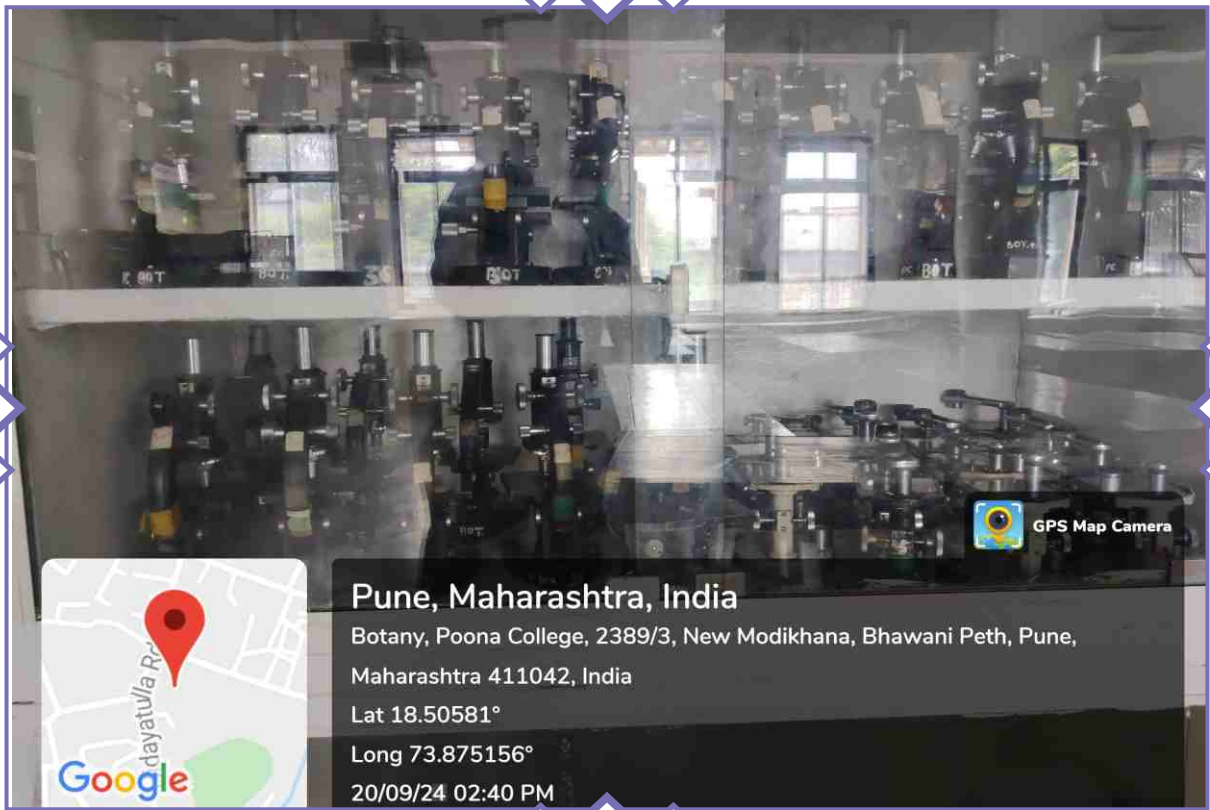
Lat 18.50581°

Long 73.875156°

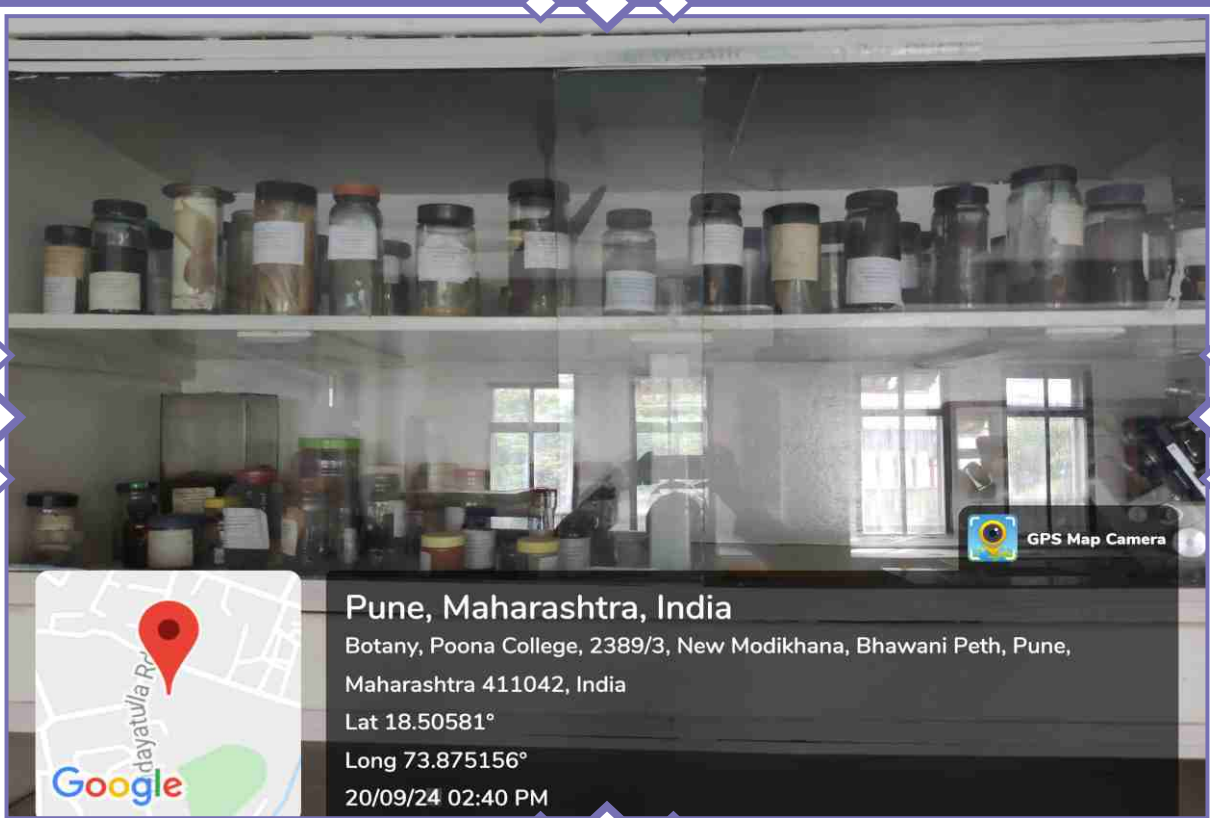
18/09/24 06:23 PM



GPS Map Camera

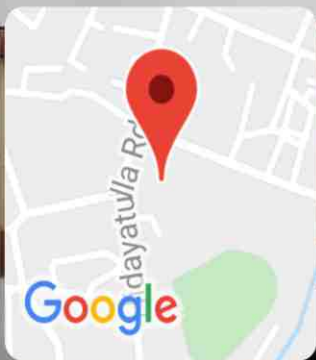


IT room



Stack Room





Pune, Maharashtra, India

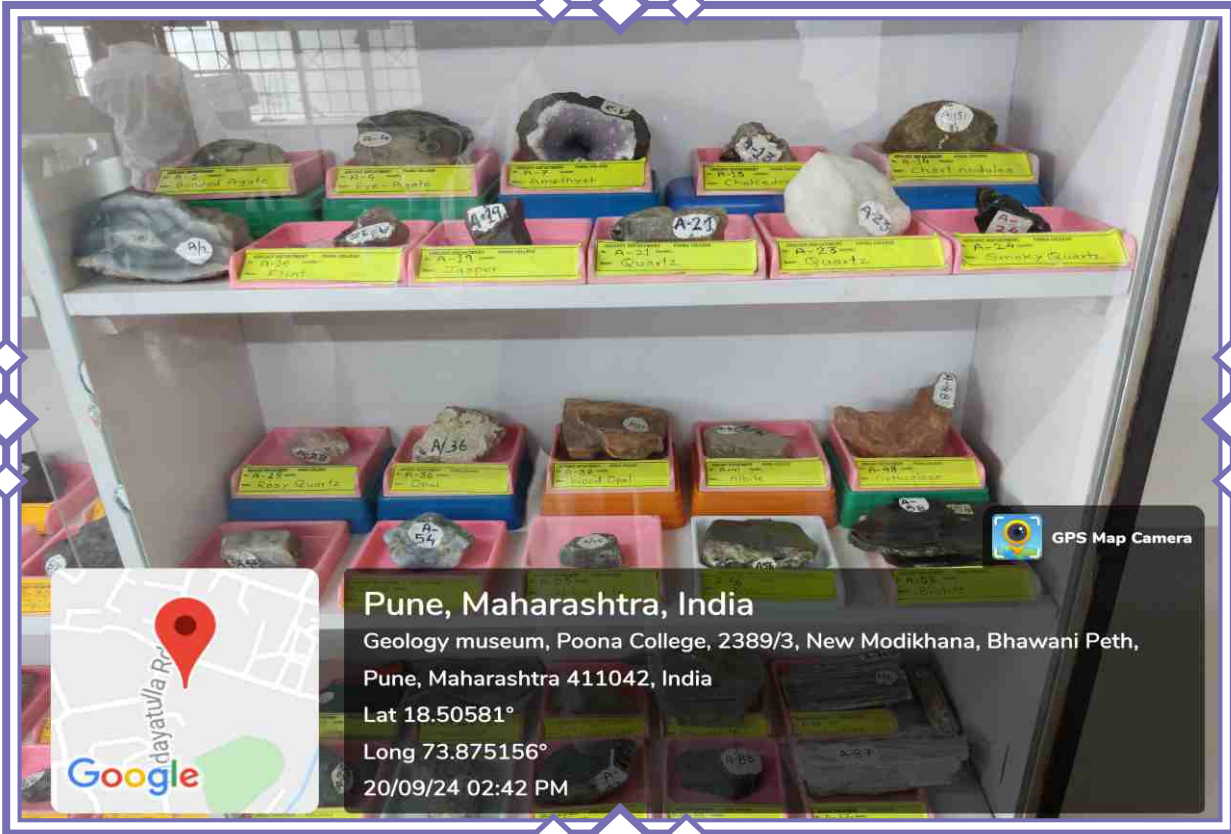
Botany, Poona College, 2389/3, New Modikhana, Bhawani

Peth, Pune, Maharashtra 411042, India

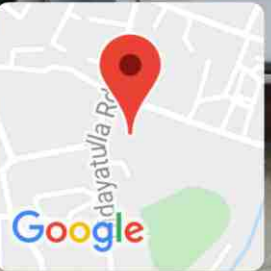
Lat 18.50581°

Long 73.875156°

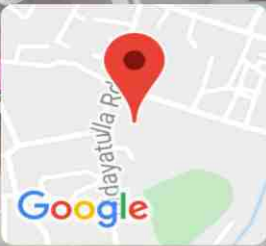
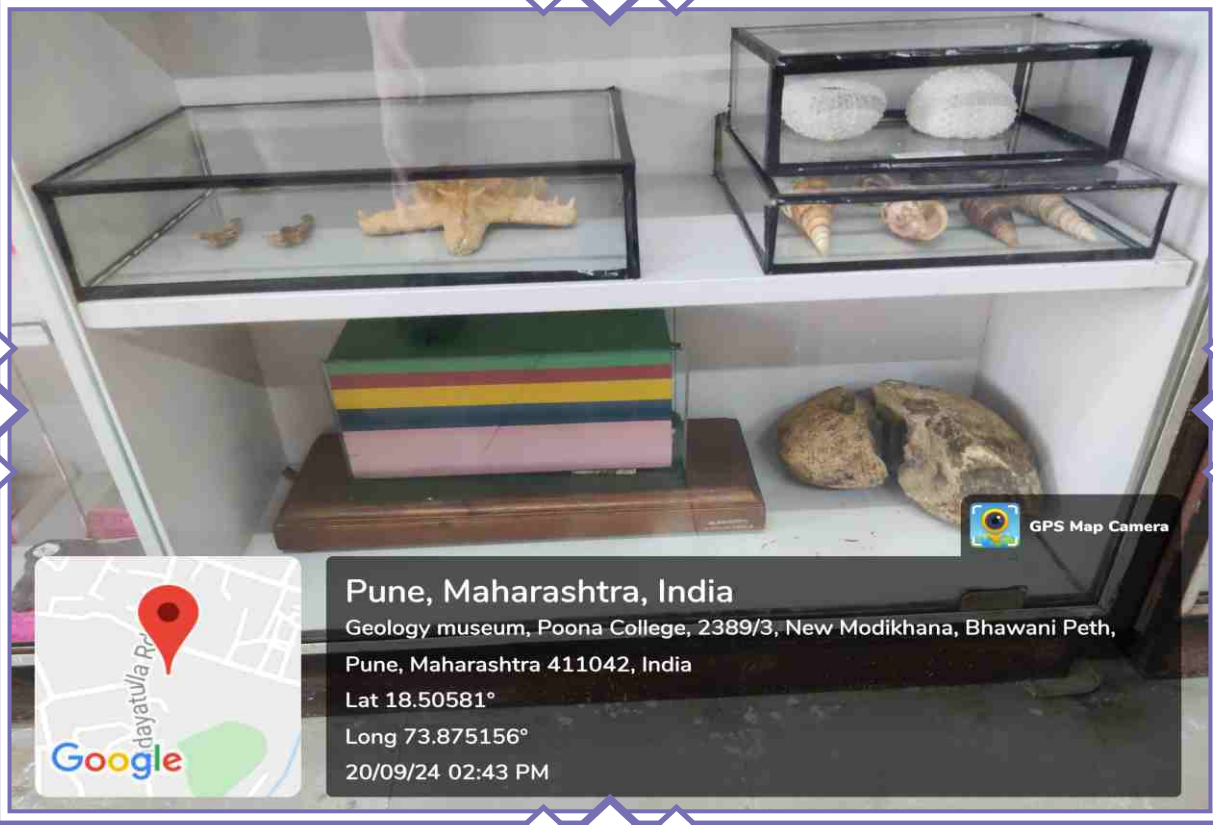
20/09/24 02:40 PM



Pune, Maharashtra, India
Geology museum, Poona College, 2389/3, New Modikhana, Bhawani Peth,
Pune, Maharashtra 411042, India
Lat 18.50581°
Long 73.875156°
20/09/24 02:42 PM



Pune, Maharashtra, India
Geology museum, Poona College, 2389/3, New Modikhana, Bhawani Peth,
Pune, Maharashtra 411042, India
Lat 18.50581°
Long 73.875156°
20/09/24 02:43 PM



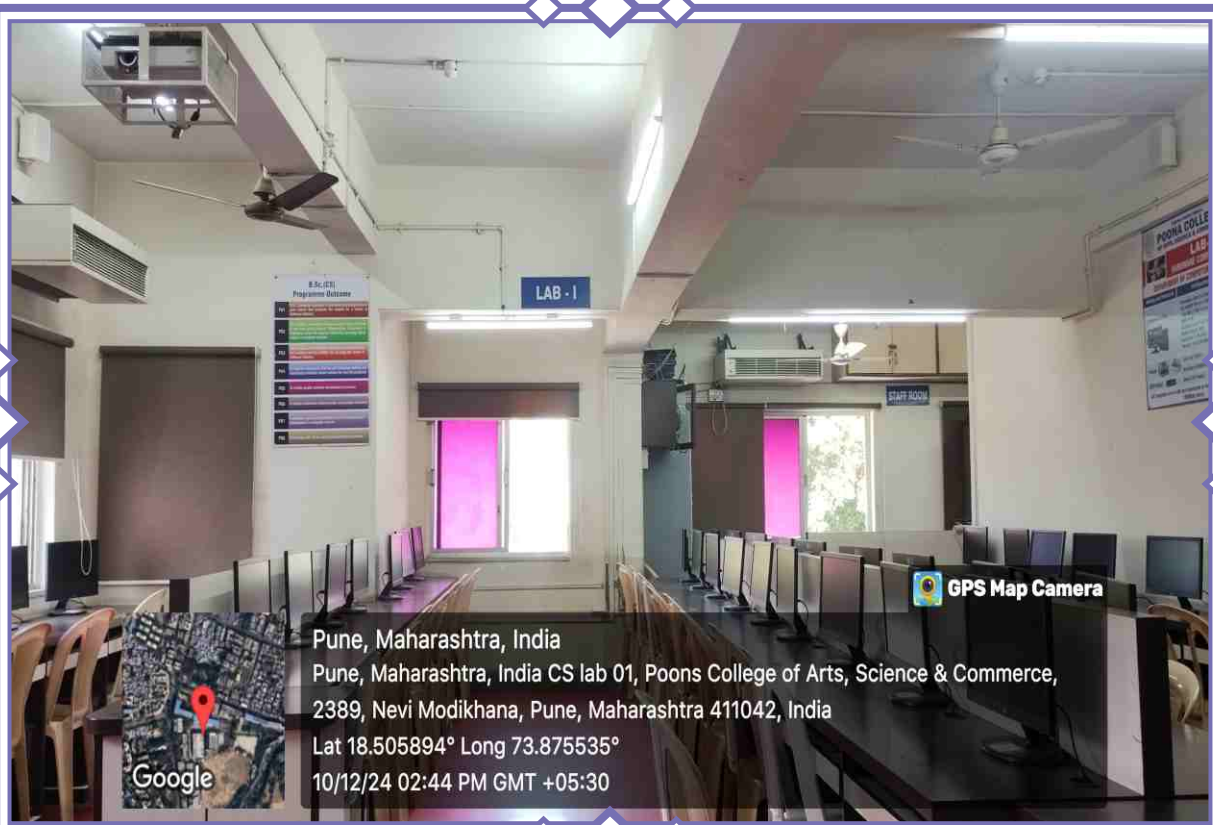
Pune, Maharashtra, India

Geology museum, Poona College, 2389/3, New Modikhana, Bhawani Peth,
Pune, Maharashtra 411042, India

Lat 18.50581°

Long 73.875156°

20/09/24 02:43 PM



Pune, Maharashtra, India

Pune, Maharashtra, India CS lab 01, Poons College of Arts, Science & Commerce,
2389, Nevi Modikhana, Pune, Maharashtra 411042, India

Lat 18.505894° Long 73.875535°

10/12/24 02:44 PM GMT +05:30





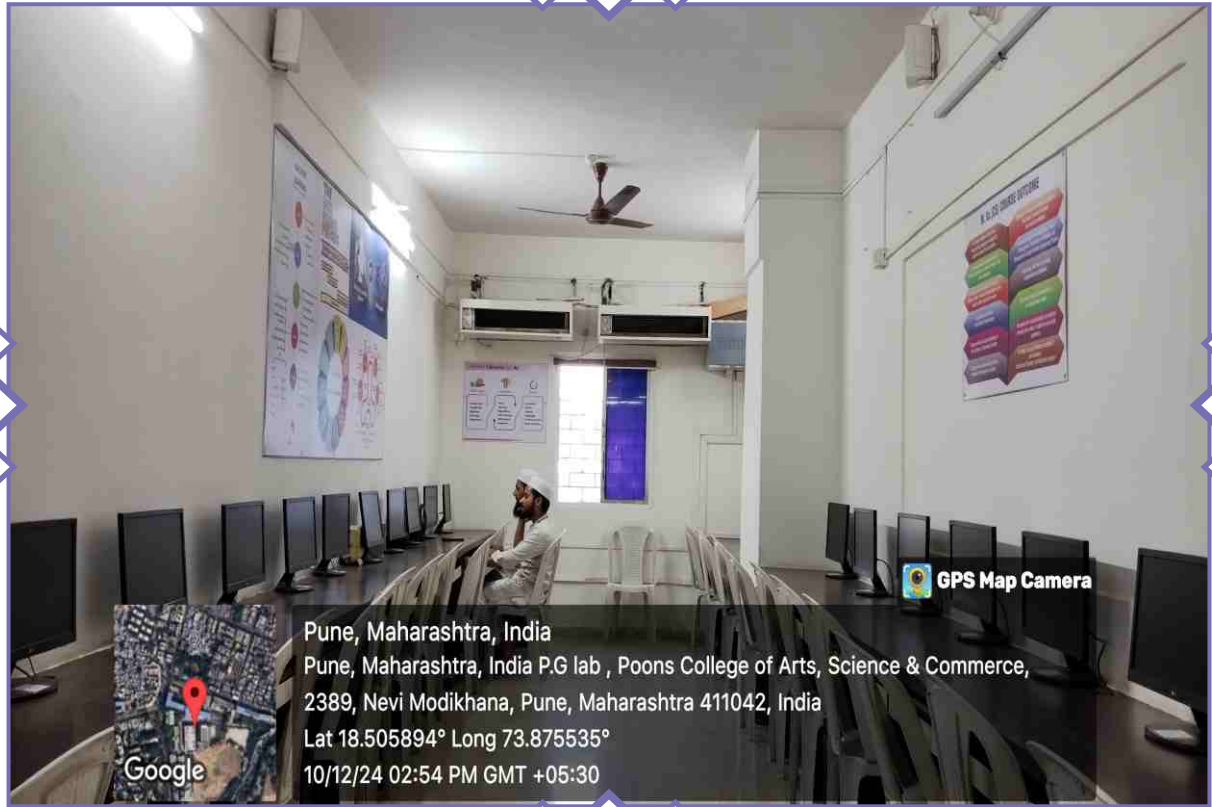
Pune, Maharashtra, India

Geology museum, Poona College, 2389/3, New Modikhana,
Bhawani Peth, Pune, Maharashtra 411042, India

Lat 18.50581°

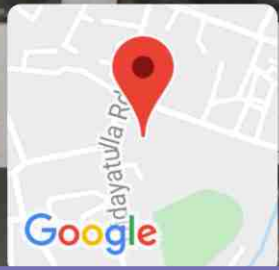
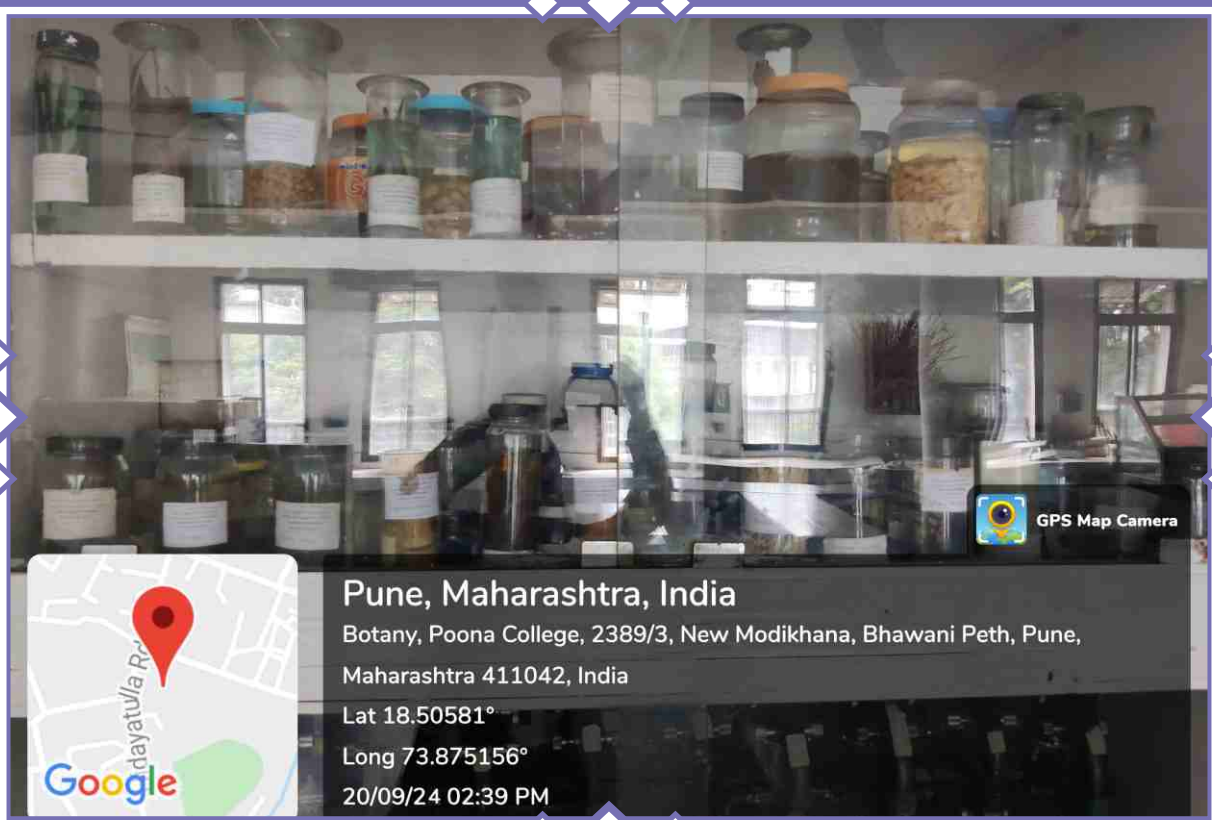
Long 73.875156°

20/09/24 02:42 PM



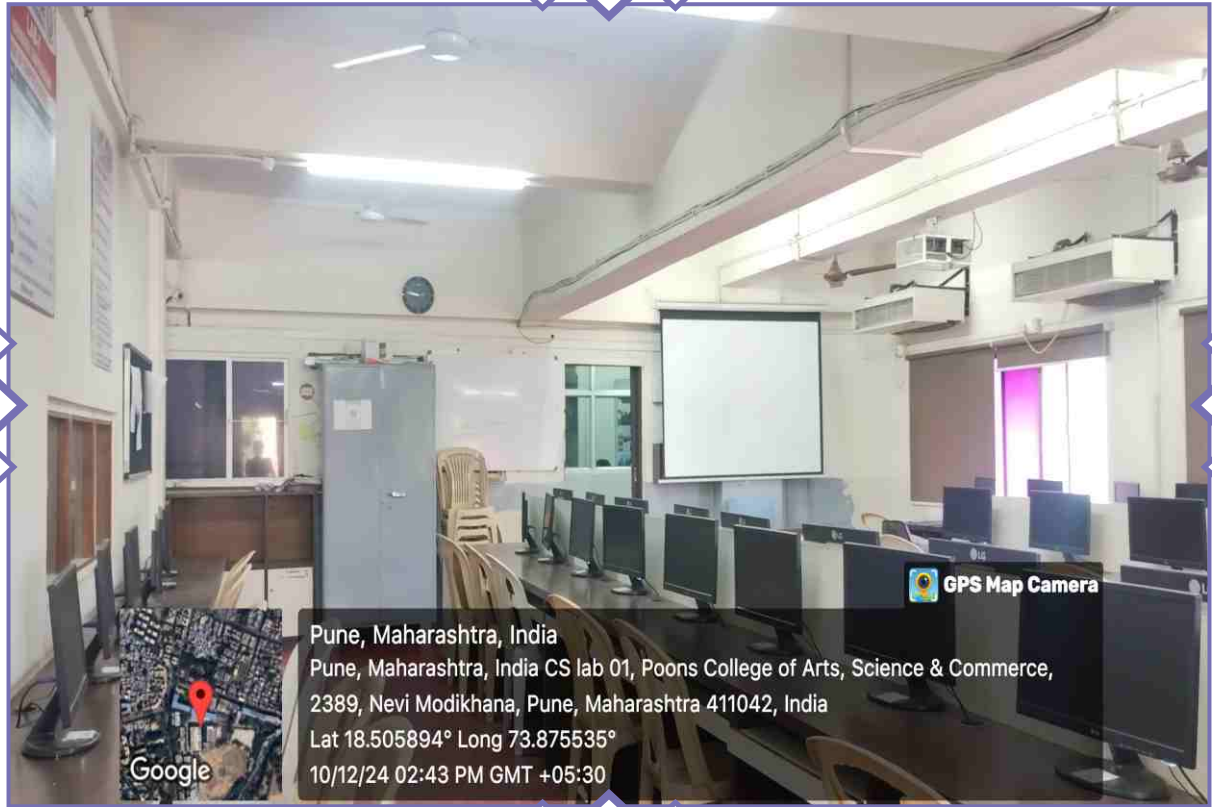
Pune, Maharashtra, India
Pune, Maharashtra, India P.G lab , Poons College of Arts, Science & Commerce,
2389, Nevi Modikhana, Pune, Maharashtra 411042, India
Lat 18.505894° Long 73.875535°
10/12/24 02:54 PM GMT +05:30

CS-Lab



Pune, Maharashtra, India
Botany, Poona College, 2389/3, New Modikhana, Bhawani Peth, Pune,
Maharashtra 411042, India
Lat 18.50581°
Long 73.875156°
20/09/24 02:39 PM

Botany-lab



Pune, Maharashtra, India
Pune, Maharashtra, India CS lab 01, Poons College of Arts, Science & Commerce,
2389, Nevi Modikhana, Pune, Maharashtra 411042, India
Lat 18.505894° Long 73.875535°
10/12/24 02:43 PM GMT +05:30

CS-Lab-01



Pune, Maharashtra, India
Pune, Maharashtra, India CS lab 02, Poons College of Arts, Science & Commerce,
2389, Nevi Modikhana, Pune, Maharashtra 411042, India
Lat 18.505894° Long 73.875535°
10/12/24 02:49 PM GMT +05:30

CS-Lab-02



GPS Map Camera



Pune, Maharashtra, India

Geology museum, Poona College, 2389/3, New Modikhana,
Bhawani Peth, Pune, Maharashtra 411042, India

Lat 18.50581°

Long 73.875156°

20/09/24 02:45 PM

Geology-lab



Pune, Maharashtra, India

Geology museum, Poona College, 2389/3, New Modikhana,

Bhawani Peth, Pune, Maharashtra 411042, India

Lat 18.50581°

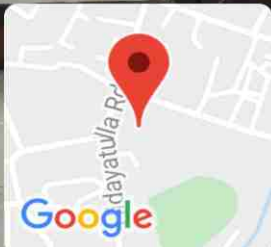
Long 73.875156°

20/09/24 02:42 PM



GPS Map Camera

Geology-lab1



Pune, Maharashtra, India

Geology museum, Poona College, 2389/3, New Modikhana, Bhawani Peth,
Pune, Maharashtra 411042, India

Lat 18.50581°

Long 73.875156°

20/09/24 02:43 PM

Geology-lab2



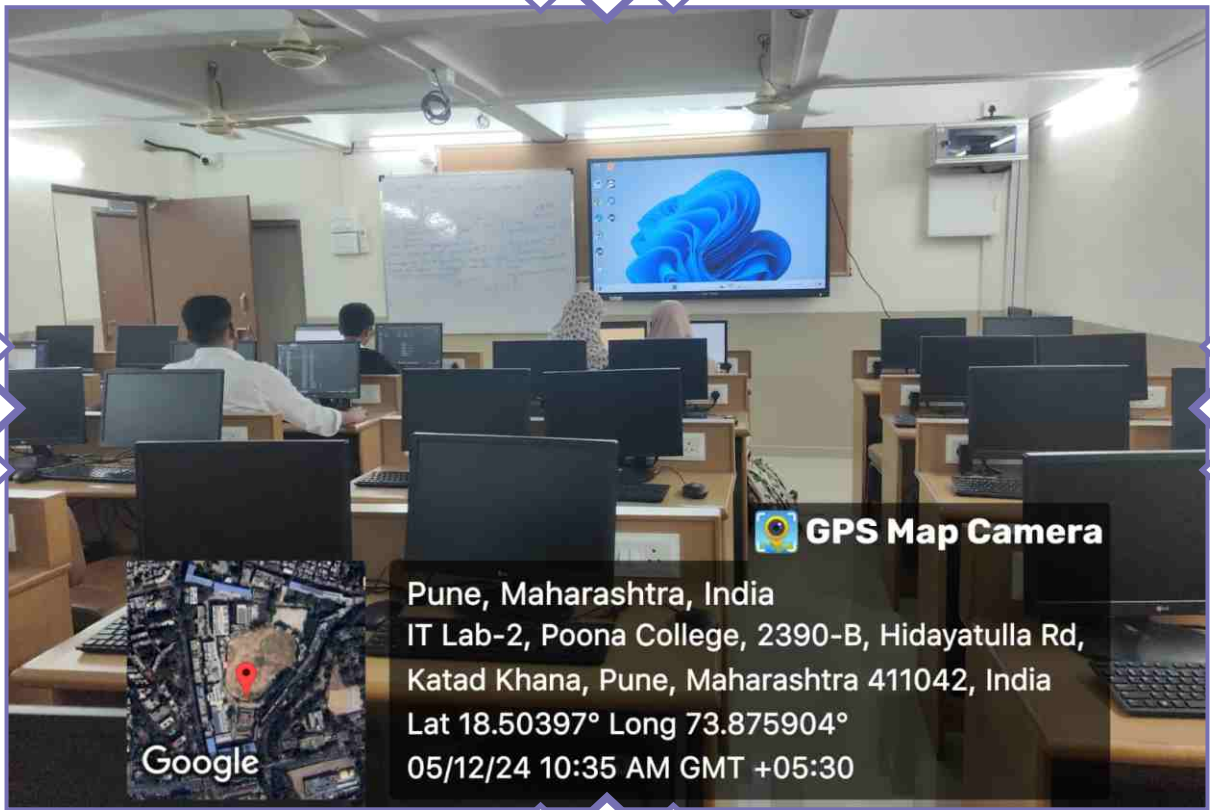
Pune, Maharashtra, India

IT Lab-1, Poona College, 2390-B, Hidayatulla Rd,
Katad Khana, Pune, Maharashtra 411042, India

Lat 18.50397° Long 73.875904°

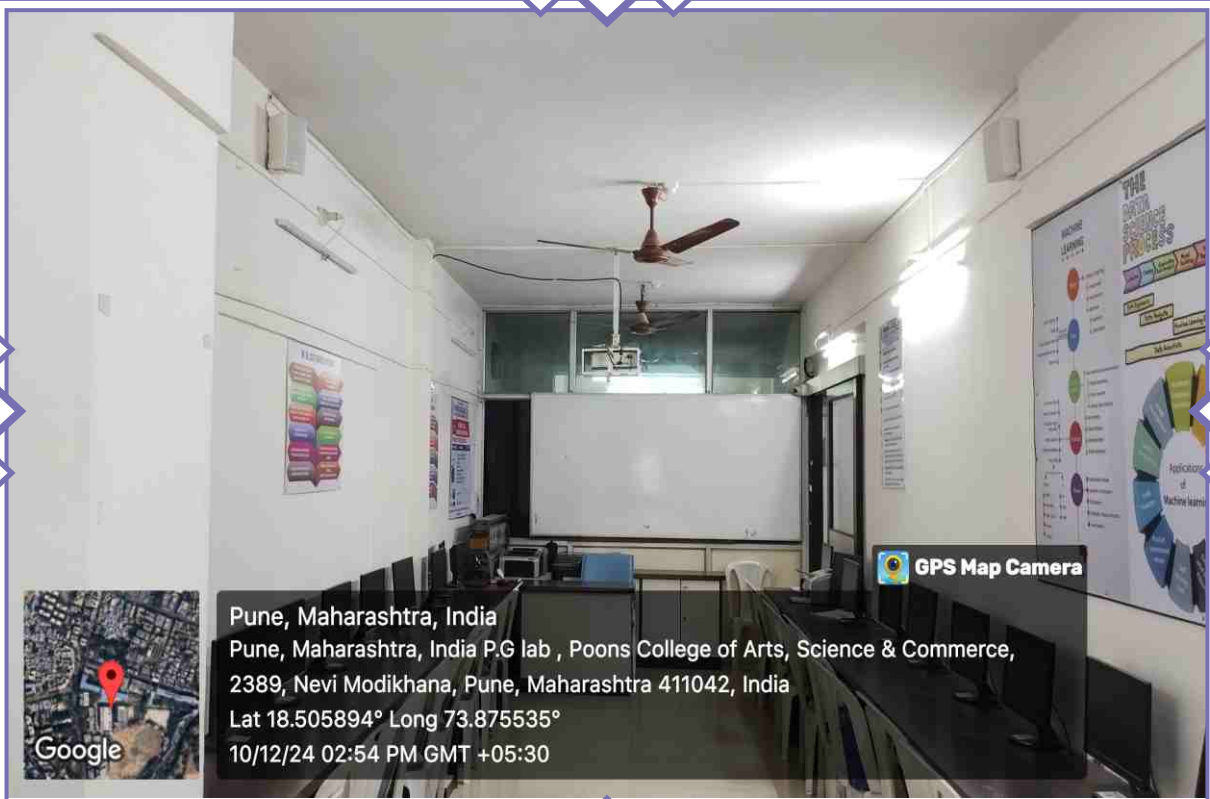
05/12/24 10:38 AM GMT +05:30

IT lab-1



Pune, Maharashtra, India
IT Lab-2, Poona College, 2390-B, Hidayatulla Rd,
Katad Khana, Pune, Maharashtra 411042, India
Lat 18.50397° Long 73.875904°
05/12/24 10:35 AM GMT +05:30

IT lab-2



Pune, Maharashtra, India
Pune, Maharashtra, India P.G lab , Poons College of Arts, Science & Commerce,
2389, Nevi Modikhana, Pune, Maharashtra 411042, India
Lat 18.505894° Long 73.875535°
10/12/24 02:54 PM GMT +05:30

PG-Lab-01



Tally Lab



Pune, Maharashtra, India

Zoology museum, Poona College, 2389/3, New Modikhana,

Bhawani Peth, Pune, Maharashtra 411042, India

Lat 18.50581°

Long 73.875156°

18/09/24 06:22 PM



GPS Map Camera



Anjuman Khairul Islam's
**POONA COLLEGE
OF ARTS, SCIENCE & COMMERCE**

K. B. Hidayatullah Road, Camp, Pune - 411001.



Internal Quality Assurance Cell (IQAC)

The IQAC plays a pivotal role in enhancing and maintaining the quality of education of an institute. Its role has become more important with the changing scenario in Indian higher education. Our IQAC was established in the year 2004 when the college went for first assessment and accreditation by National Assessment and Accreditation Council, Bangalore (NAAC).

Objectives:

- The primary aim of the IQAC is to develop a system for conscious, consistent and catalytic action to improve the academic and administrative performance of the institution.
- To develop a system for conscious, consistent and catalytic improvement in the performance of its principal stakeholders, that is staff and students of the Institution.
- To promote innovative practices that continually improves the effectiveness of the learning experiences of students and staff.
- To uphold the goals of quality enhancement and sustenance towards organizing various activities and programmes on the Campus.
- To promote a learner centric environment for students and staff that foster the mission and vision of the Institution.



Anjuman Khairul Islam's

POONA COLLEGE
OF ARTS, SCIENCE & COMMERCE

Camp, Pune - 411001

Tel.: 020 - 26454240 / 26446319

Fax : 020 - 26453707

Website : www.poonacollege.edu.in

Email : principal@poonacollege.edu.in