



ANJUMAN KHAIRUL ISLAM'S
POONA COLLEGE
OF ARTS, SCIENCE & COMMERCE

CAMP, PUNE-411001



INFRASTRUCTURE AND PHYSICAL FACILITIES



Geotagged Photos





Front view



Open Air Auditorium



Pune, Maharashtra, India
Horticulture Garden, Poona College, 2389/3, New Modikhana,
Bhawani Peth, Pune, Maharashtra 411042, India

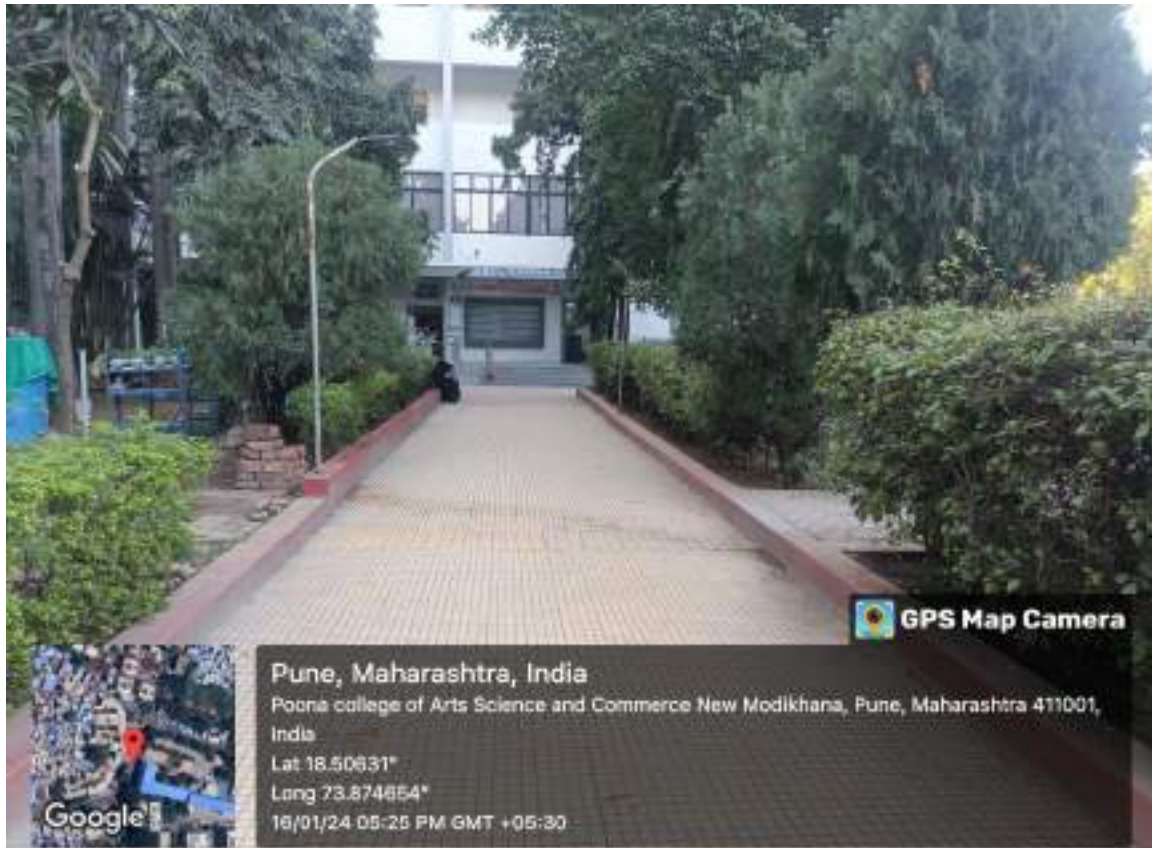
Horticulture Garden



Pune, Maharashtra, India
Horticulture Garden, Poona College, 2389/3, New Modikhana,
Bhawani Peth, Pune, Maharashtra 411042, India

Horticulture Garden





Pune, Maharashtra, India
Poona college of Arts Science and Commerce New Modikhana, Pune, Maharashtra 411001, India
Lat 18.50631°
Long 73.874854°
16/01/24 05:25 PM GMT +05:30

GPS Map Camera




Pune, Maharashtra, India
Poona college of Arts Science and Commerce New Modikhana, Pune, Maharashtra 411001, India
Lat 18.50631°
Long 73.874854°
16/01/24 05:24 PM GMT +05:30

GPS Map Camera





Pune, Maharashtra, India
Poona college of Arts Science and Commerce New Modikhana, Pune, Maharashtra 411001, India
Lat 18.50631°
Long 73.874654°
16/01/24 04:20 PM GMT +05:30

 **GPS Map Camera**



Pune, Maharashtra, India
Poona college of Arts Science and Commerce New Modikhana, Pune, Maharashtra 411001, India
Lat 18.50631°
Long 73.874654°
16/01/24 04:18 PM GMT +05:30

 **GPS Map Camera**





 **GPS Map Camera**



Pune, Maharashtra, India


Poona college of Arts Science and Commerce New Modikhana, Pune, Maharashtra 411001, India

Lat 18.50631°

Long 73.874654°

16/01/24 04:10 PM GMT +05:30



 **GPS Map Camera**



Pune, Maharashtra, India

Poona college of Arts Science and Commerce New Modikhana, Pune, Maharashtra 411001, India

Lat 18.50631°

Long 73.874654°

16/01/24 04:08 PM GMT +05:30



GPS Map Camera



Pune, Maharashtra, India
Poona college of Arts Science and Commerce New Modikhana, Pune, Maharashtra 411001, India
Lat 18.50631°
Long 73.874654°
16/01/24 04:07 PM GMT +05:30




GPS Map Camera



Pune, Maharashtra, India
Poona college of Arts Science and Commerce New Modikhana, Pune, Maharashtra 411001, India
Lat 18.50631°
Long 73.874654°
16/01/24 04:06 PM GMT +05:30



Pune, Maharashtra, India
Poona college of Arts Science and Commerce New Modikhana, Pune, Maharashtra 411001,
India
Lat 18.50631°
Long 73.874854°
16/01/24 04:05 PM GMT +05:30

 **GPS Map Camera**



Pune, Maharashtra, India
Poona college of Arts Science and Commerce New Modikhana, Pune, Maharashtra 411001,
India
Lat 18.50631°
Long 73.874854°
16/01/24 04:04 PM GMT +05:30

 **GPS Map Camera**




Pune, Maharashtra, India

Poona college of Arts Science and Commerce New Modkhana, Pune, Maharashtra 411001, India

Lat 18.50831°

Long 73.874854°

16/01/24 04:03 PM GMT +05:30

 **GPS Map Camera**











Pune, Maharashtra, India

Poona college of Arts Science and Commerce New Modikhana, Pune, Maharashtra 411001, India

Lat 18.50631°

Long 73.874654°

16/01/24 03:44 PM GMT +05:30

Google



Anjuman Khairul Islam's

POONA COLLEGE OF ARTS, SCIENCE & COMMERCE

- Affiliated to Savitribai Phule Pune University: ID No PU/PN/ASC/023/1970
- Junior College Index No: J-11.15.004
- Government of Maharashtra and Savitribai Phule Pune University Recognized Minority Institute
- UGC - 2(f) & 12 (B) Status • NAAC Re-accredited College • DST - FIST Funded College



K. B. Hidayatullah Road, Camp,
Pune - 411001, (MS), India



+91-20-2645 4240 / 2644 6319.



principal@poonacollege.edu.in
www.poonacollege.edu.in

Professor (Dr.) Aftab Anwar Shaikh

M.Com, Ph.D (Busi. Admin.)

PRINCIPAL

Teaching-Learning Support Facilities

S.No	Facility	Description of the Adequacy of the facility used for Teaching Learning
1.	62 Classrooms/ labs	The classrooms are provided with adequate and durable sets of furniture for organized, comfortable seating. The lecture halls and laboratories are well lit, with good ventilation and equipped with the necessary teaching learning aids/tools viz., Blackboard/Whiteboard, LCD, maps, charts, for effective teaching-learning.
2.	Seminar halls	The seminar halls have sophisticated and state of the art ICT enabled essential equipment, Wi-Fi, which are extensively used by both the staff and students for conduct of academic events, viz., guest lectures, student seminars presentation, quiz, debates, panel discussions, thematic events etc.
3.	Open Air Auditorium	The very spacious and open air auditorium with effective acoustics accommodates 600 students at a time. It has a broad stage. As per requirement sound system with amplifiers and public address system are arranged. This facilitates conduct awareness programs/cultural and several other events etc.

Laboratories

S.No	Lab Facility	Description of the Adequacy of the Lab facility used for Teaching-learning
1.	Botany	Botany laboratories are a reservoir to preserve specimens of herbs, fruits, medicinal plants, herbarium etc., to add to the teaching learning resources. Lab is well established and equipped with U.V. Spectrophotometer, Laminar airflow Centrifuge, to facilitate faculty and student educational and research work. Horticulture Gardens – to conduct of physiology experiments and to train students on Horticultural techniques, vegetative propagation methods, identification and importance of medicinal plants. The botanical garden has a number of ornamental, medicinal and vegetable plants.



Anjuman Khairul Islam's

POONA COLLEGE OF ARTS, SCIENCE & COMMERCE

- Affiliated to Savitribai Phule Pune University: ID No PU/PN/ASC/023/1970
- Junior College Index No: J-11.15.004
- Government of Maharashtra and Savitribai Phule Pune University Recognized Minority Institute
- UGC - 2(f) & 12 (B) Status • NAAC Re-accredited College • DST - FIST Funded College



K. B. Hidayatullah Road, Camp,
Pune - 411001. (MS), India



+91-20-2645 4240 / 2644 6319.



principal@poonacollege.edu.in
www.poonacollege.edu.in

Professor (Dr.) Aftab Anwar Shaikh

M.Com, Ph.D (Busi. Admin.)

PRINCIPAL

2.	Zoology	There are 3 zoology labs with necessary equipments attached with LCD projectors. Zoological charts for various practical's, high and modern equipments, specimen, of almost all chordates and Non-chordates .Histological and whole mount slides of various organisms and specimen. Collection of skeletons of human, frog, collection of corals, fishes, models of fossils and also photos of eminent scientists with the description of their contributions and work. The department has computer systems with internet facility.
3.	Chemistry	The 8 Chemistry labs, research lab, 1 balance rooms, storerooms, preparation rooms are spacious, well ventilated and well equipped with enough glassware and apparatus viz; Spectrophotometers, Conductivity meters, Potentiometers, pH-meters, Electronic balances, and others used for UG and PG students.
4.	Mathematics	The lab has a LCD projector, 2 computer systems and a laptop with internet facility to execute practical approach of derivatives and theorems. It has its own departmental library with good collection of reference books, text books as well as e-books.
5.	Physics	Department Of Physics Consists of 4 well equipped labs with measurement instruments, Mechanical, Optical, Electronic Instruments, Cathode Ray Oscilloscopes, Nuclear Counter, Nuclear Detectors etc. Apart from the above the lab has computers, Printers, Stabilizers, LCD Projector, etc. Department has its own library with good collection of reference books and text books for the reference of Students and staff.
6.	Electronics	Department of Electronic Science consists of 3 well equipped laboratories with electronic testing and measuring instruments for UG, out of 3 labs 2 laboratories are equipped with 30 computers along with LCD projector for online teaching. C, MATLAB, microcontrollers, analog and digital, instrumentation, Embedded design and Python programming. PG labs contains 13 computers, hardware, software, advanced communication, Mechatronics, Labview, Pspice/Orcad, proteus, VHDL etc. It has departmental



Anjuman Khairul Islam's

POONA COLLEGE OF ARTS, SCIENCE & COMMERCE

- Affiliated to Savitribai Phule Pune University: ID No PU/PN/ASC/023/1970
- Junior College Index No: J-11.15.004
- Government of Maharashtra and Savitribai Phule Pune University Recognized Minority Institute
- UGC - 2(f) & 12 (B) Status • NAAC Re-accredited College • DST - FIST Funded College



K. B. Hidayatullah Road, Camp,
Pune - 411001. (MS), India



+91-20-2645 4240 / 2644 6319.



principal@poonacollege.edu.in
www.poonacollege.edu.in

Professor (Dr.) Aftab Anwar Shaikh

M.Com, Ph.D (Busi. Admin.)

PRINCIPAL

		library for the reference of students and staff.
7.	Computer Science Lab	There 3 computer science labs with suitable computing resources for computer practical sessions. They are well Air conditioned with Wi-Fi and UPS back up. required generic software is available.
8.	Statistics Lab	It is equipped with 27 computer systems, all are connected with LAN with internet facility on main compute(server) in the lab. Also 25 scientific cell calculators, one laser jet printer. Statistical practical's are explained on white board and online practical's from YouTube are also demonstrated using LCD projector. The lab also has UPS to provide backup of three to four hours during power failure. The department has its own departmental library for staff and students.
9.	Geology Lab	Geology laboratory is well equipped with geological instruments and possesses a good collection of minerals, rock specimens, crystals models, fossil specimens and microscopes. The departmental library has good collection of books and research journals with more than 500 books in our central library in various branches of earth sciences.
0.	Department of Commerce	The department is equipped with computers, Wi-Fi& LAN. For research students, Ph.D thesis and research students progress reports, university new publications, and research journals are accessible. Under-graduate and Post-graduate students are provided with magazines devoted to competitive tests and entrepreneurship development in order to instill an entrepreneurial spirit in them. Practical books, syllabus copies for various degrees, previous year exam-papers, career guidance brochures, and books on interview tactics and personal development are also available.
11.	Psychology	The dept is fully equipped with necessary facilities.
12.	Politics	The dept is fully equipped with necessary facilities.



Anjuman Khairul Islam's

POONA COLLEGE OF ARTS, SCIENCE & COMMERCE

- Affiliated to Savitribai Phule Pune University: ID No PU/PN/ASC/023/1970
- Junior College Index No: J-11.15.004
- Government of Maharashtra and Savitribai Phule Pune University Recognized Minority Institute
- UGC - 2(f) & 12 (B) Status • NAAC Re-accredited College • DST - FIST Funded College



K. B. Hidayatullah Road, Camp,
Pune - 411001, (MS), India



+91-20-2645 4240 / 2644 6319.



principal@poonacollege.edu.in
www.poonacollege.edu.in

Professor (Dr.) Aftab Anwar Shaikh

M.Com, Ph.D (Busi. Admin.)

PRINCIPAL

	Economics	It has computer system with internet connectivity. Separate departmental space is provided with basic infrastructure.
13.	History	The dept is fully equipped with necessary facilities and shares one computer with political science and Psychology departments.
14.	Sociology	The department is fully equipped with necessary facilities one computer and printer along with internet connectivity and basic software shares with PC Academy for Competitive Examination Center.
15.	Department of BBA-CA	The dept is fully equipped with necessary facilities.
16.	Department of BBA	The dept is fully equipped with necessary facilities.
17.	English /Hindi/Urdu/Languages Dept	The English /Hindi/Urdu/Languages Dept have necessary facilities, Urdu dept has its departmental library and Language software for English.
18.	NSS room	The facility is provided for the NSS committee to operate, to coordinate and undertake various activities.
19.	NCC room	A separate facility is provided for NCC to store necessary equipments for practice, uniforms and training devices.

Centers of Excellence

1.	PC-ACE	The department is fully equipped with necessary facilities one computer and one printer along with internet connectivity and basic software shares with Department of Sociology. The Centrally located Poona College Academy for Competitive Examination. Motivating and concealing students for several competitive examinations, conduct basic lectures and personal concealing according to potential
----	--------	--



Anjuman Khairul Islam's

POONA COLLEGE OF ARTS, SCIENCE & COMMERCE

- Affiliated to Savitribai Phule Pune University: ID No PU/PN/ASC/023/1970
- Junior College Index No: J-11.15.004
- Government of Maharashtra and Savitribai Phule Pune University Recognized Minority Institute
- UGC - 2(f) & 12 (B) Status • NAAC Re-accredited College • DST - FIST Funded College



K. B. Hidayatullah Road, Camp,
Pune - 411001. (MS), India



+91-20-2645 4240 / 2644 6319.



principal@poonacollege.edu.in
www.poonacollege.edu.in

Professor (Dr.) Aftab Anwar Shaikh

M.Com, Ph.D (Busi. Admin.)

PRINCIPAL

		of the students and to be placed students according to their potentials and interest.
2.	IEDC	College has Innovation and Entrepreneurship Development Cell with the motive to identify, train, motivate, support and help the enterprising incubatee to strive for their enterprise realization and make every student and/or employee of Poona College an Enterprising student and/or employee. The cell is comprised of all basic facilities separately. The cell strives for developing various business-related skills of marketing, quality management production, distribution and human resource management etc. and also brings to know the sources of help and support available for starting a small-scale business.

Support facilities

1.	Exam Cell	Exam department is headed by Controller of Examination (COE) for smooth conduction of all exam schedules prescribed SPPU. All the policies and decision are made related to Board of Examinations and Evaluation (BEE) of Pune university. The aim is to execute fair and timely exams as per academic calendar for various UG and PG courses. For exams related guidance and assistance to students and staff, various committee and groups such as Examination Committee Members (ECM), Vigilant squad, Graduation Ceremony Committee, Centralized Assessment Program (CAP)etc. are also formed. The department is equipped with computer systems, printers, Student Information Management System –SIMS a customized package, vridhhi software, UPS, Scanner, xerox facility.
2.	Reception	It is a facility with a receptionist to welcome and guide visitors, parents and students, is provided with a system & an intercom to reach out to all the departments.
3.	Principal Office	Principal chambers comprise of spacious room and outer waiting area for the visitors and a well-ventilated, well furnished with- CCTV screens, Fax, Direct telephone line, award display unit.



Anjuman Khairul Islam's

POONA COLLEGE OF ARTS, SCIENCE & COMMERCE

- Affiliated to Savitribai Phule Pune University; ID No PU/PN/ASC/023/1970
- Junior College Index No: J-11.15.004
- Government of Maharashtra and Savitribai Phule Pune University Recognized Minority Institute
- UGC - 2(f) & 12 (B) Status • NAAC Re-accredited College • DST - FIST Funded College



K. B. Hidayatullah Road, Camp,
Pune - 411001. (MS), India



+91-20-2645 4240 / 2644 6319.



principal@poonacollege.edu.in
www.poonacollege.edu.in

Professor (Dr.) Aftab Anwar Shaikh

M.Com, Ph.D (Busi. Admin.)

PRINCIPAL

4.	Conference Hall	It is a well-furnished hall, equipped with audio system, Wi-Fi, and a LCD with a seating capacity of 80 to hold various important meetings and deliberations.
5.	IQAC room	It is a center provided with dedicated equipments to fulfill the needs of Internal Quality Assurance System.
6.	Health Center	It is a facility equipped with necessary apparatus and medication to handle first aid.
7.	Prayer Room	It is fully equipped prayer arrangements, collection of religious books with capacity of 200 people.
8.	Store-room	A private stationery and dumb centre with necessary facilities.
9.	Cafeteria	A spacious well-ventilated cafeteria to cater to the food and beverage needs of the staff and students. Separate arrangements for staff and students. In addition to that separate seating arrangements for boy and girl students.
10.	Fire safety	A comprehensive fire safety system covering the entire campus is put in place as per norms specified by the fire department of the Government.
11.	Power Backup	The college has 125 KVA, max. 100KW, 50 Hz-1500 rpm, 40°C- Cummins genset with inbuilt AVR (Automatic voltage regulator) installed in the campus. Also, it has AMF (Automatic mains failure) cum changeover switch for all the three buildings.
12.	Campus Security	The institution ensures campus security by employing regular, round the clock campus security through professional security services. Surveillance cameras are installed at all key areas.



Principal

Principal
AKI'S Poon College of Arts,
Science & Commerce
Camp, Pune.



ANJUMAN KHAIRUL ISLAM'S
POONA COLLEGE
OF ARTS, SCIENCE & COMMERCE

CAMP, PUNE-411001



LABORATORIES AND RESEARCH FACILITIES



Geotagged Photos



LANGUAGE LAB



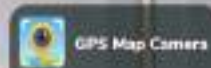
Pune, Maharashtra, India

Language Lab, Poona College, 2389/3, New Modikhana,
Bhawani Peth, Pune, Maharashtra 411042, India

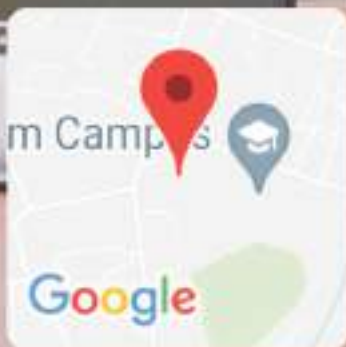
Lat 18.50581°

Long 73.875156°

25/09/21 03:31 PM



LANGUAGE LAB



Pune, Maharashtra, India

Language Lab, Poona College, 2389/3, New Modikha
Bhawani Peth, Pune, Maharashtra 411042, India

Lat 18.50581°

Long 73.875156°

25/09/21 12:53 PM

LANGUAGE LAB





2390, K.B. Hidayatullah Rd, Katad Khana, Pune,
Maharashtra 411001, India

Latitude

18.5056746°

Longitude

73.8748012°

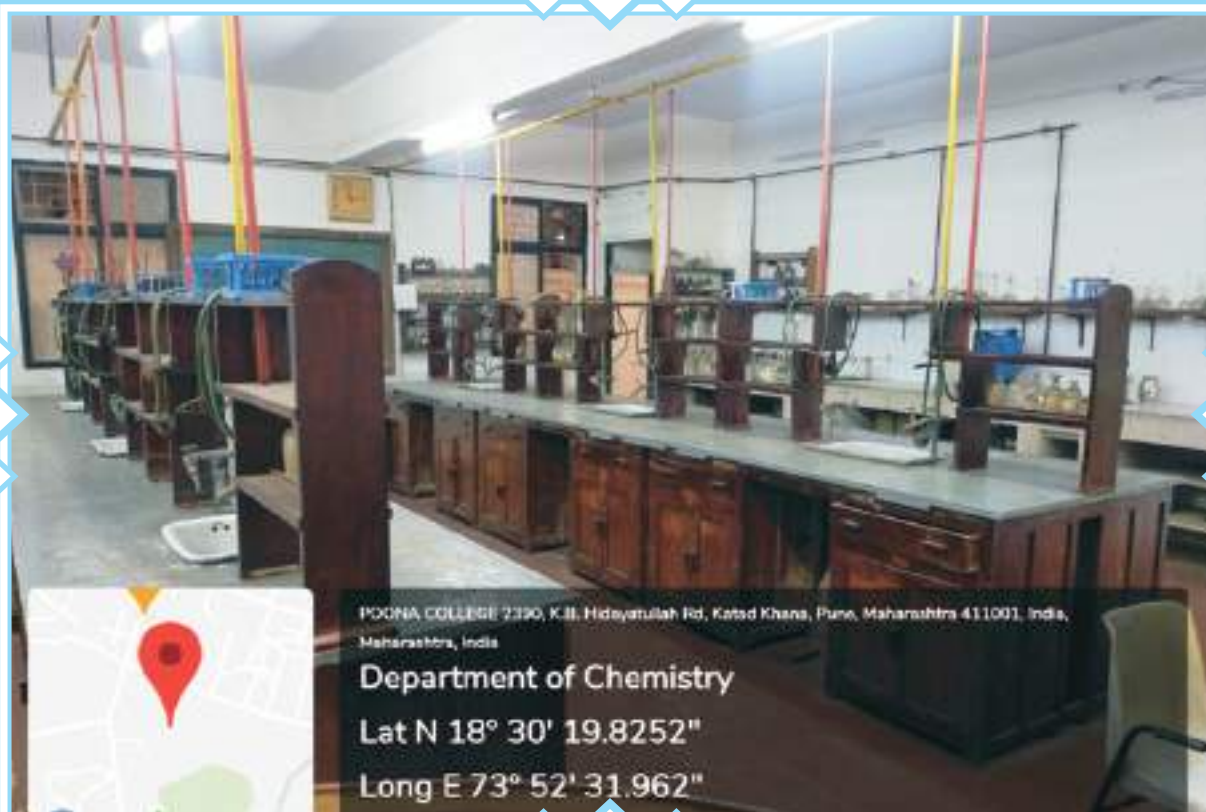
Local 12:47:15 PM

GMT 07:17:15 AM

Altitude 0 meters

Wednesday, 08-18-2021

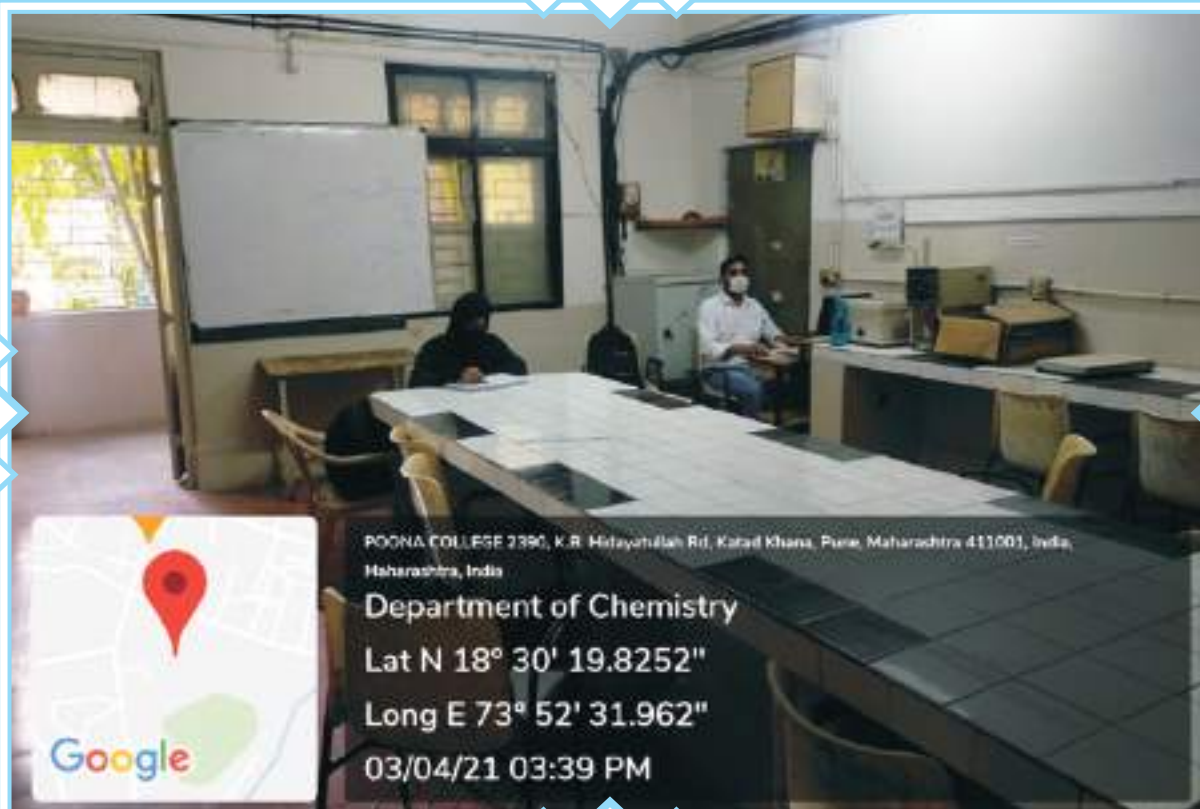
DEPARTMENT OF CHEMISTRY



Department of Chemistry- Lab1



Department of Chemistry- Research Lab



Department of Chemistry- Lab3







2390, K.B. Hidayatullah Rd, Katad Khana, Pune,
Maharashtra 411001, India

Latitude

18.5056746°

Longitude

73.8748012°

Local 12:47:15 PM

GMT 07:17:15 AM

Altitude 0 meters

Wednesday, 08-18-2021



2390, K.B. Hidayatullah Rd, Katad Khana, Pune,
Maharashtra 411001, India

Latitude
18.5056746°

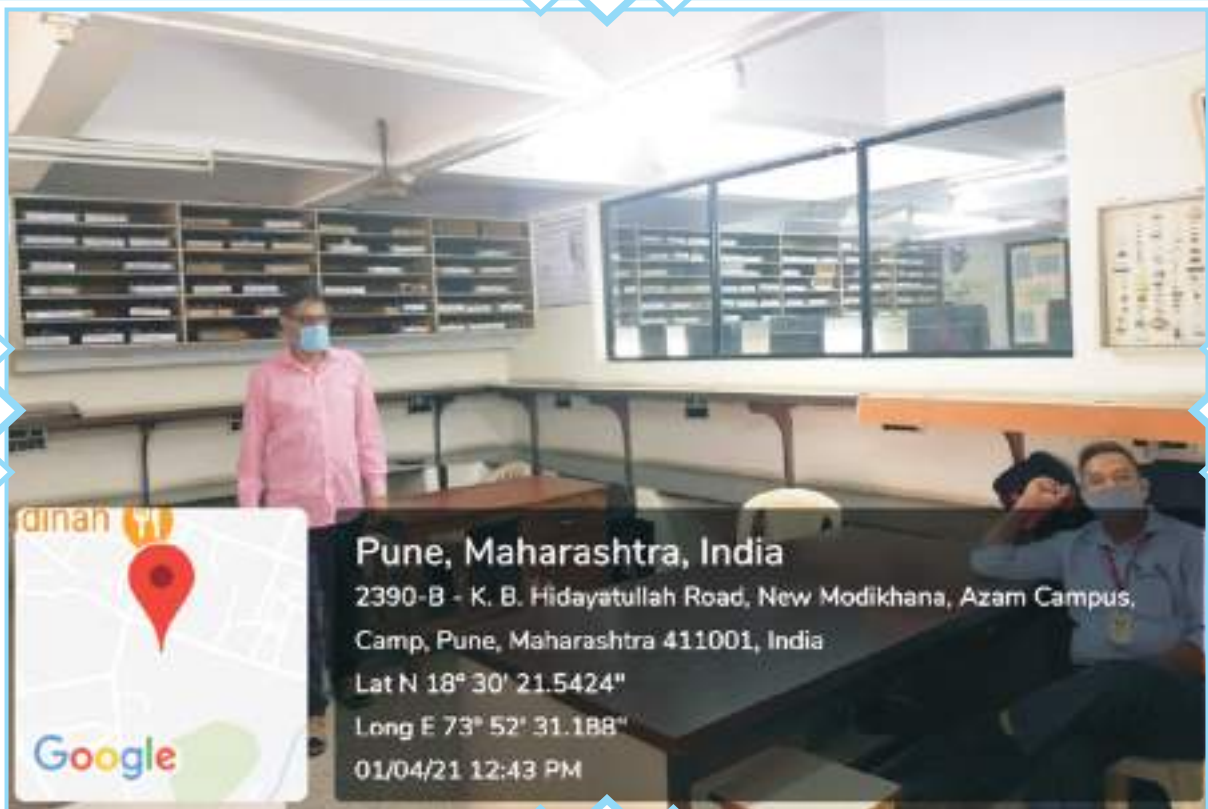
Longitude
73.8748012°

Local 12:45:32 PM

Altitude 0 meters



Department of Chemistry- Seminar Hall



Department of Electronics- Lab1



Department of Electronics- Lab2



Department of Electronics- Lab3



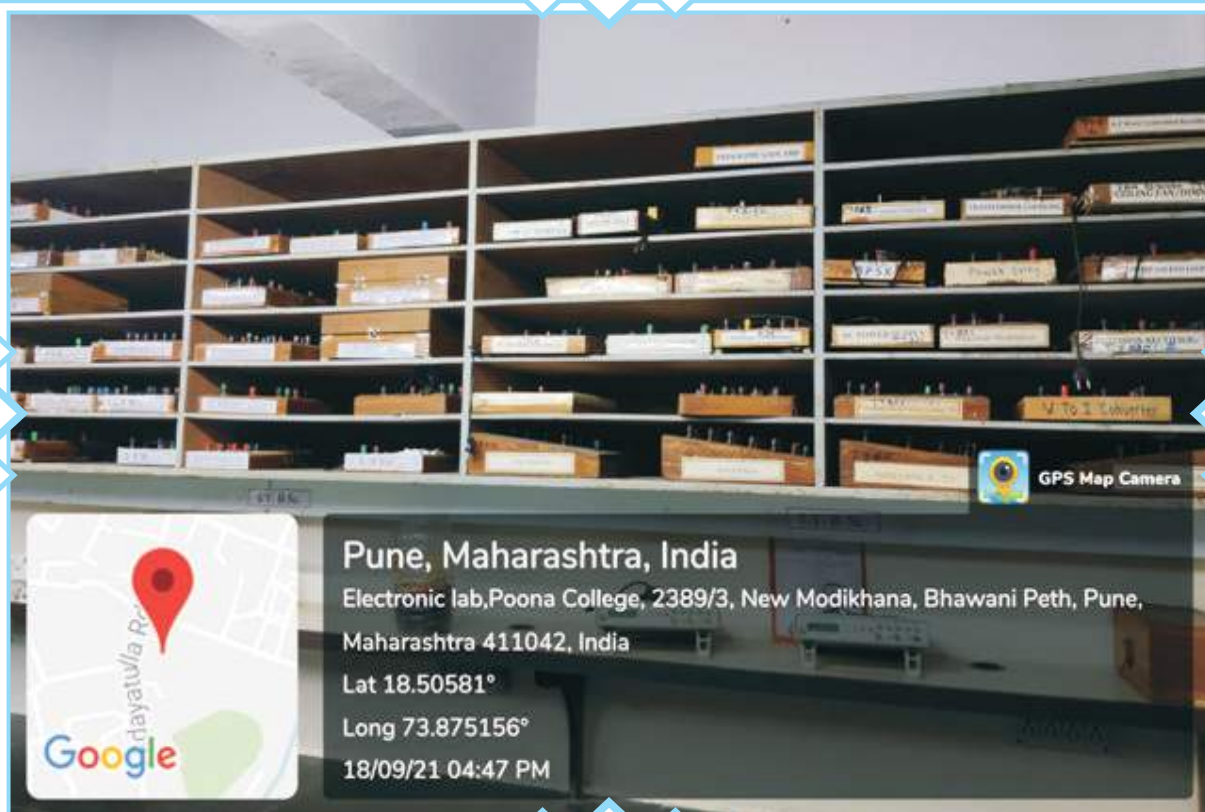
Department of Electronics- Lab



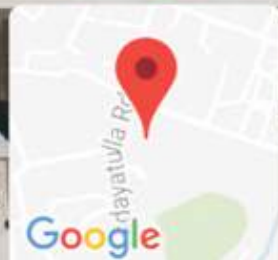
Department of Electronics – PG section Lab2



Department of Electronics - PG section Lab1



Department of Electronics -Lab



Pune, Maharashtra, India

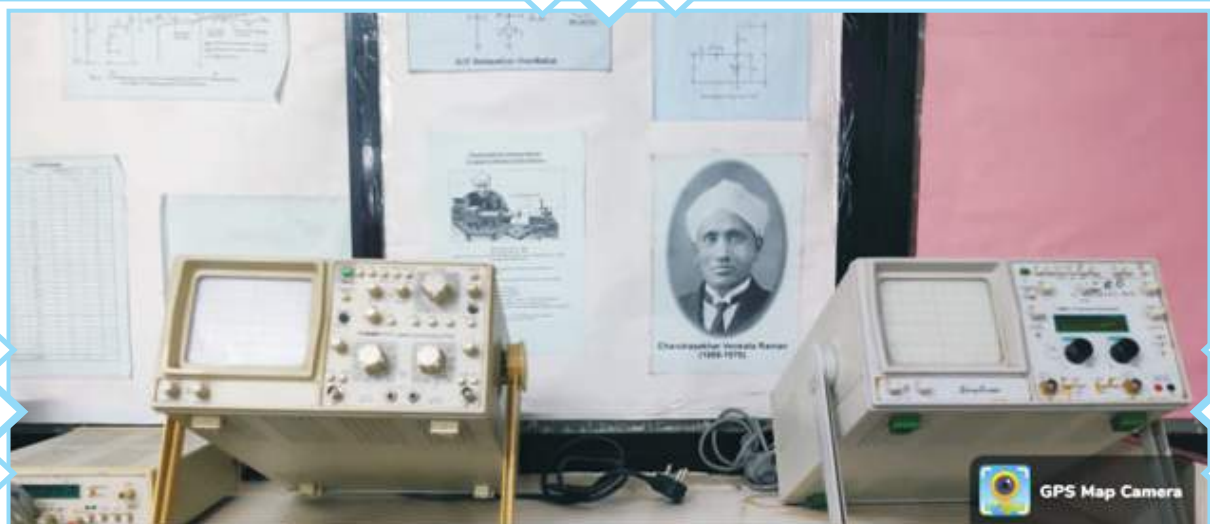
Electronic lab, Poona College, 2389/3, New Modikhana, Bhawani Peth, Pune,

Maharashtra 411042, India

Lat 18.50581°

Long 73.875156°

18/09/21 04:46 PM



Pune, Maharashtra, India

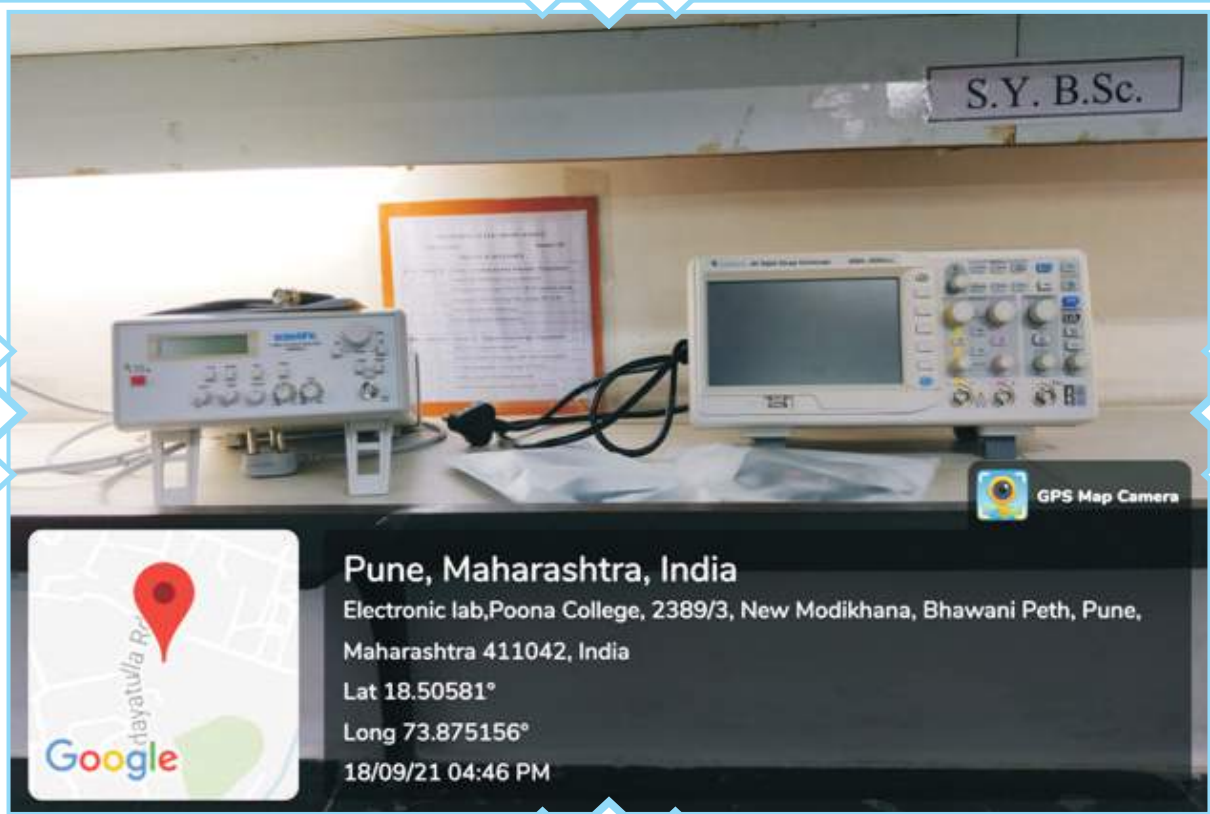
Electronic lab, Poona College, 2389/3, New Modikhana, Bhawani Peth, Pune,

Maharashtra 411042, India

Lat 18.50581°

Long 73.875156°

18/09/21 04:46 PM



Department of Physics –Computer Lab



2289, near Azam campus, New Modikhana, Camp, Pune, Maharashtra 411001, India



2289, near Azam campus, New Modikhana, Camp, Pune,



2289, near Azam campus, New Modikhana, Camp, Pune,
Maharashtra 411001, India

Latitude
18.5068507°

Longitude
73.8759037°



2390, K.B. Hidayatullah Rd, Katad Khana, Pune, Maharashtra
411001, India

Latitude
18.5056746°

Longitude
73.8748012°



2289, near Azam campus, New Modikhana, Camp, Pune,
Maharashtra 411001, India

Latitude
18.5068507°

Longitude
73.8759037°

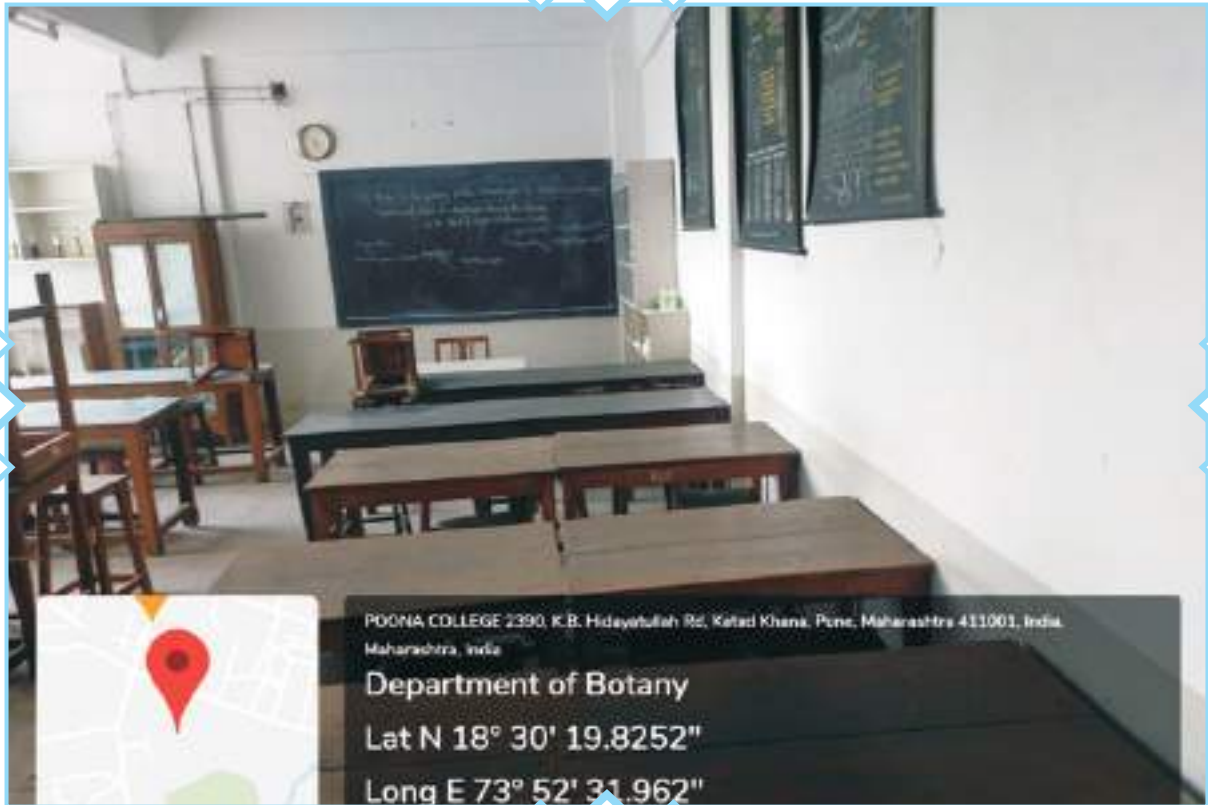
Local 01:28:37 PM

Altitude 0 meters

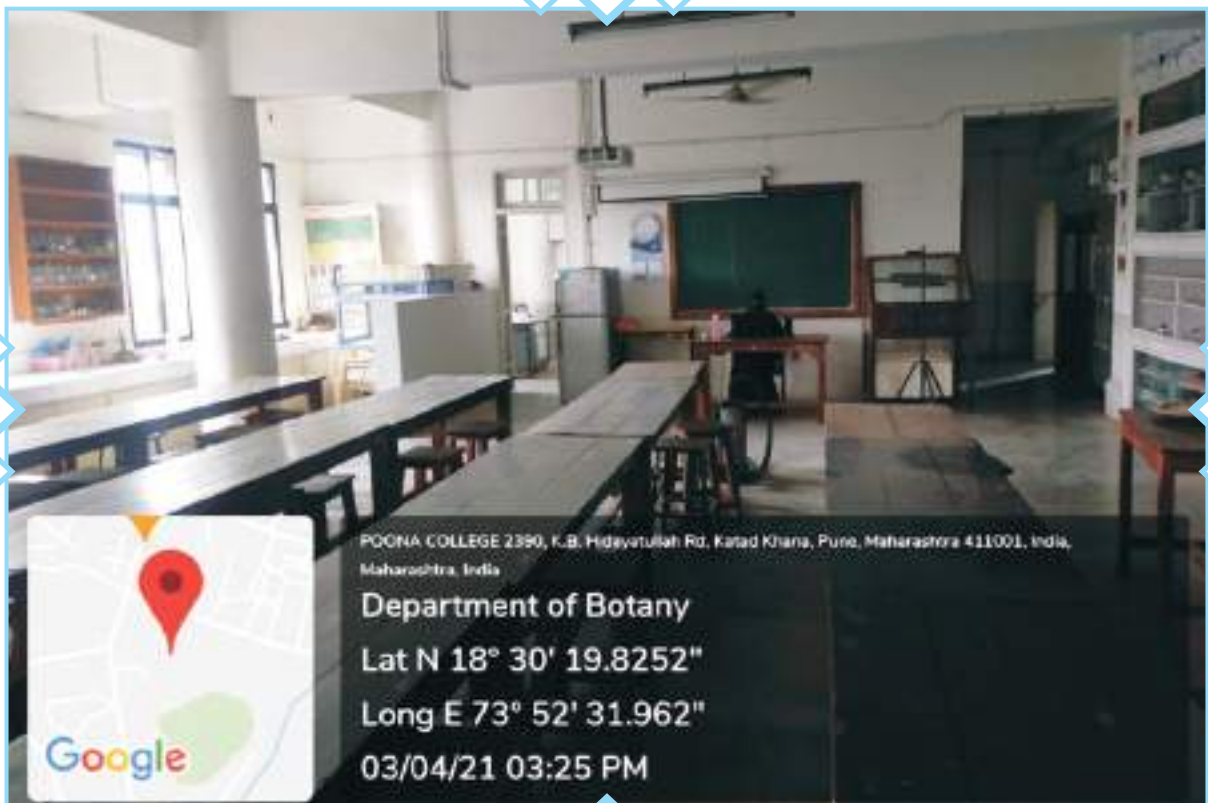


Department of Physics – Dark room

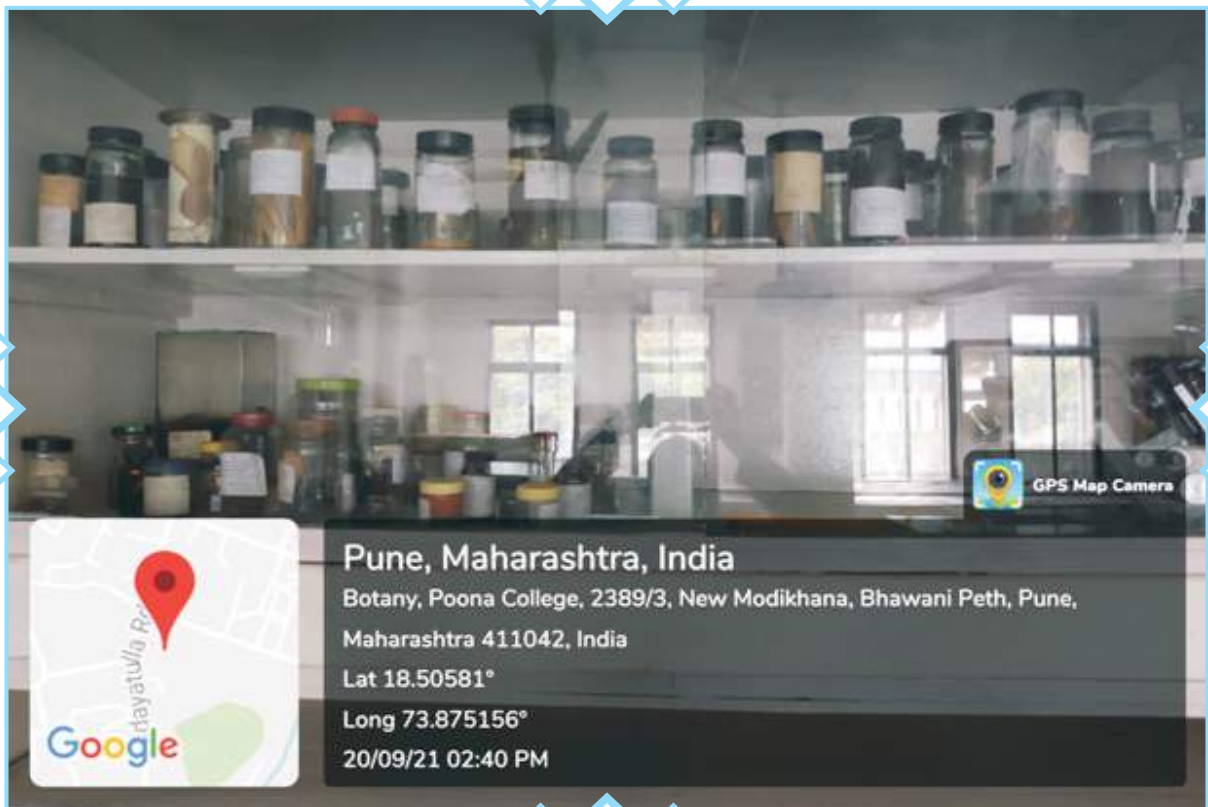
DEPARTMENT OF BOTANY



Department of Botany- Lab1



Department of Botany- Lab2





Pune, Maharashtra, India

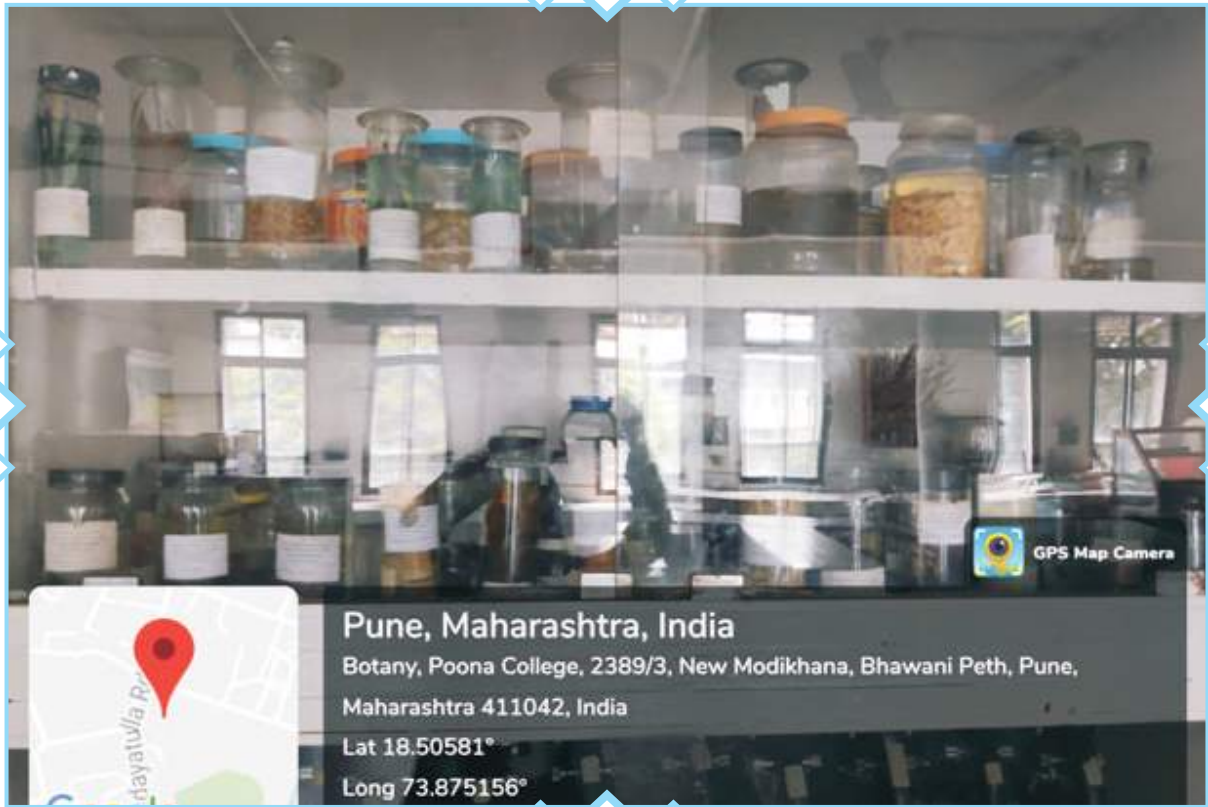
Botany, Poona College, 2389/3, New Modikhana, Bhawani

Peth, Pune, Maharashtra 411042, India

Lat 18.50581°

Long 73.875156°

20/09/21 02:40 PM





2390, K.B. Hidayatullah Rd, Katad Khana, Pune, Maharashtra
411001, India

Latitude
18.5056746°

Longitude
73.8748012°

DEPARTMENT OF COMMERCE



POONA COLLEGE 2390, K.B. Hidayatullah Rd, Katad Khana, Pune, Maharashtra 411001, India, Maharashtra, India

Department of Commerce

Lat N 18° 30' 19.8252"

Long E 73° 52' 31.962"

03/04/21 03:14 PM

Commerce Lab

DEPARTMENT OF ZOOLOGY



Department of Zoology-Lab1



Department of Zoology-Lab2



bhawani peth, opp. poona college, Pune, Maharashtra
411042, India

Latitude
18.505962°

Longitude
73.8749529°

Local 01:04:50 PM
GMT 07:34:50 AM

Altitude 508.6 meters
Wednesday, 08-18-2021



bhawani peth, opp. poona college, Pune, Maharashtra
411042, India

Latitude

Longitude



Pune, Maharashtra, India

Zoology museum, Poona College, 2389/3, New Modikhana
Bhawani Peth, Pune, Maharashtra 411042, India

Lat 18.50581°

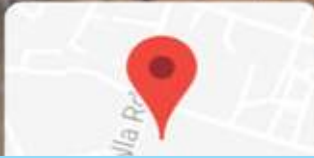
Long 73.875156°

18/09/21 06:24 PM







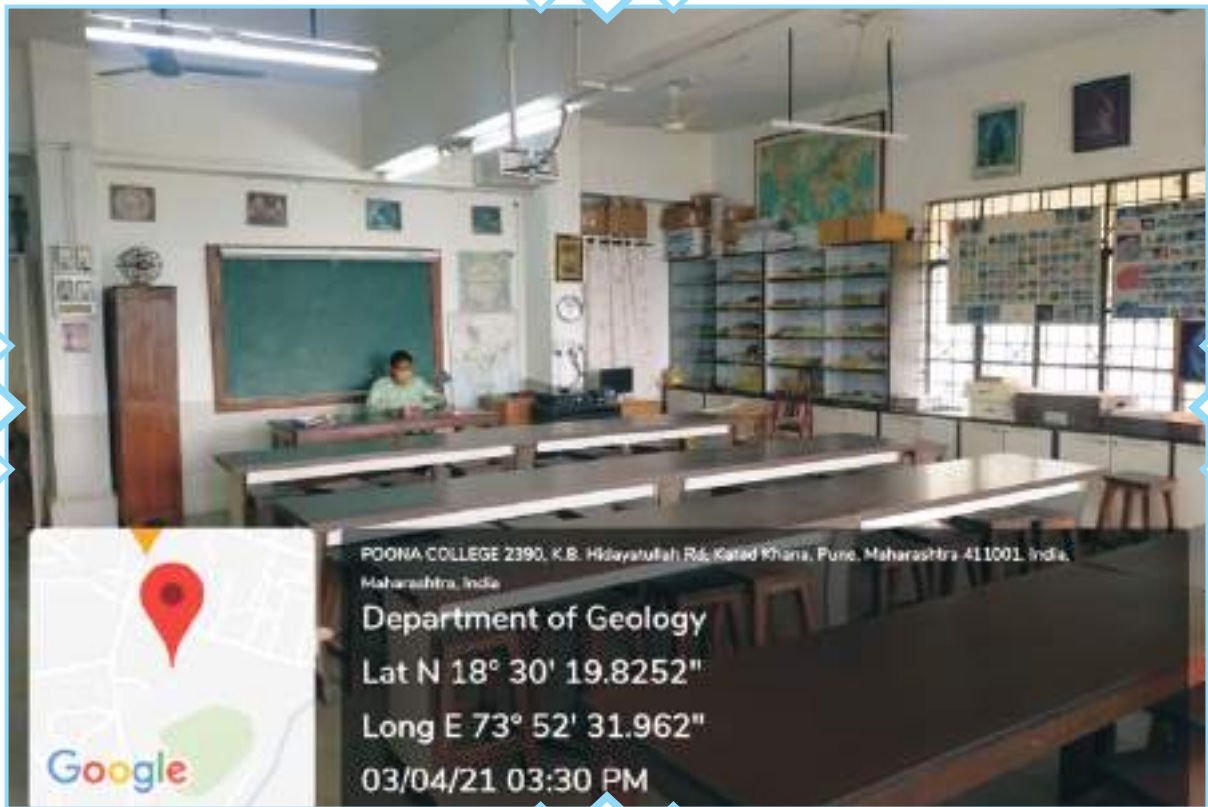


Pune, Maharashtra, India
Zoology museum, Poona College, 2389/3, New Modikhana,
Bhawani Peth, Pune, Maharashtra 411042, India



Pune, Maharashtra, India
Zoology museum, Poona College, 2389/3, New Modikhana,
Bhawani Peth, Pune, Maharashtra 411042, India

DEPARTMENT OF GEOLOGY



Department of Geology -Lab









Open Air Auditorium



DEPARTMENT OF COMPUTER SCIENCE



Department of Computer Science - Lab I



Department of Computer Science - Lab II



Department of Computer Science - PG Lab

DEPARTMENT OF STATISTICS



Statistics Lab



Anjuman Khairul Islam's

POONA COLLEGE OF ARTS, SCIENCE & COMMERCE

- Affiliated to Savitribai Phule Pune University: ID No PU/PN/ASC/023/1970
- Junior College Index No: J-11.15.004
- Government of Maharashtra and Savitribai Phule Pune University Recognized Minority Institute
- UGC - 2(f) & 12 (B) Status • NAAC Re-accredited College • DST - FIST Funded College



K. B. Hidayatullah Road, Camp,
Pune - 411001. (MS), India



+91-20-2645 4240 / 2644 6319.



principal@poonacollege.edu.in
www.poonacollege.edu.in

Professor (Dr.) Aftab Anwar Shaikh

M.Com, Ph.D (Busi. Admin.)

PRINCIPAL

Details of Built-up Area

Description of Campus Area	
Campus Area	2 Acres
Built-up area in sq.m	6,153.51 sq.m
Campus area in sq. ft	66,202.51 sq. ft

Sr. No.	Area Description	Area	
		Sq. ft.	Sq. mtr.
1.	IVth floor Lecture Hall No. 44	927.08	86.12
2.	IVth floor Lecture Hall No. 43	811.03	75.37
3.	IVth floor Lecture Hall No. 42	813.55	75.58
4.	IIIrd floor Lecture Hall No. 41	691.12	64.24
5.	IIIrd floor Lecture Hall No. 40	748.12	69.53
6.	IIIrd floor Lecture Hall No. 39	384.75	35.76
7.	IIIrd floor Lecture Hall No. 38	334.87	31.12
8.	IIIrd floor Lecture Hall No. 37	365.62	33.98
9.	IIIrd floor Geology Laboratory	700.62	65.12
10.	IIIrd floor Geology Dept.	145	13.47
11.	IIIrd floor Lecture Hall No. 36	584.06	54.28
12.	IIIrd floor Lecture Hall No. 35	294.81	27.4
13.	IIIrd floor Lecture Hall No. 34	922.5	85.7



Anjuman Khairul Islam's

POONA COLLEGE OF ARTS, SCIENCE & COMMERCE

- Affiliated to Savitribai Phule Pune University: ID No PU/PN/ASC/023/1970
- Junior College Index No: J-11.15.004
- Government of Maharashtra and Savitribai Phule Pune University Recognized Minority Institute
- UGC - 2(f) & 12 (B) Status • NAAC Re-accredited College • DST - FIST Funded College



K. B. Hidayatullah Road, Camp,
Pune - 411001. (MS), India



+91-20-2645 4240 / 2644 6319.



principal@poonacollege.edu.in
www.poonacollege.edu.in

Professor (Dr.) Aftab Anwar Shaikh

M.Com, Ph.D (Busi. Admin.)

PRINCIPAL

14.	IIIrd floor Lecture Hall No. 33	814.87	75.74
15.	IIIrd floor Lecture Hall No. 32	822.56	76.45
16.	IIIrd floor Lecture Hall No. 31	407.43	37.87
17.	IIIrd floor stair case Annexe building	183.75	17.07
18.	IIIrd floor stair case main building	216	20.07
19.	IIIrd floor passage	1989.12	184.88
20.	IIIrd floor Statistics Department	408	37.92
21.	IIIrd floor toilet	216.75	20.14
Sr. No.	Area Description	Area	
		Sq. ft.	Sq. mtr.
22.	IInd floor staff room with toilet	637.5	59.25
23.	IInd floor passage	1296.5	120.51
24.	IInd floor stair case main building	216	20.07
25.	IInd floor stair case Annexe building	183	17.07
26.	IInd floor Lecture Hall	397.5	36.94
27.	IInd floor Lecture Hall	397.5	36.94
28.	IInd floor Lecture Hall	297.5	36.94
29.	IInd floor Zoology P.G. Laboratory .	595	73.88
30.	IInd floor Zoology Dept.	259.25	24.09
31.	IInd floor Zoology Laboratory	915	85.04
32.	IInd floor Zoology Laboratory	780	72.5
33.	IInd floor Botany Laboratory	667.5	62.04



Anjuman Khairul Islam's

POONA COLLEGE OF ARTS, SCIENCE & COMMERCE

- Affiliated to Savitribai Phule Pune University: ID No PU/PN/ASC/023/1970
- Junior College Index No: J-11.15.004
- Government of Maharashtra and Savitribai Phule Pune University Recognized Minority Institute
- UGC - 2(f) & 12 (B) Status • NAAC Re-accredited College • DST - FIST Funded College



K. B. Hidayatullah Road, Camp,
Pune - 411001. (MS), India



+91-20-2645 4240 / 2644 6319.



principal@poonacollege.edu.in
www.poonacollege.edu.in

Professor (Dr.) Aftab Anwar Shaikh

M.Com, Ph.D (Busi. Admin.)

PRINCIPAL

34.	IInd floor Botany Laboratory	1404	130.5
35.	IInd floor Lecture Hall	805.12	74.83
36.	IInd floor Lecture Hall	342	31.78
37.	IInd floor Lecture Hall	619.12	64.24
38.	Ist Floor Passage	1341.14	124.68
39.	Ist Floor library reading room boys	1400	130.06
40.	Ist Floor library reading room girls	478.16	44.42
41.	Ist Floor library stack room	1008	65.03
42.	Ist Floor library working section	700	93.65
43.	Ist floor Commerce Dept.	682.12	63.4
44.	Ist floor Lecture Hall	397.5	36.94
45.	Ist floor Lecture Hall	397.5	36.94
46.	Ist floor Lecture Hall	397.5	36.94
47.	Ist floor Lecture Hall	397.5	36.94
48.	Ist floor Physics laboratory and Dept.	1192.5	110.84
49.	Ist floor Physics laboratory and Dept.	525	48.79
Sr. No.	Area Description	Area	
		Sq. ft.	Sq. mtr.
50.	Ist floor Physics laboratory and Dept.	810	75.29
51.	Ist floor Physics laboratory and Dept.	390	36.25
52.	Ist floor stair case main building	216	20.07
53.	Ist floor stair case Annexe building	183.75	17.07



Anjuman Khairul Islam's

POONA COLLEGE OF ARTS, SCIENCE & COMMERCE

- Affiliated to Savitribai Phule Pune University: ID No PU/PN/ASC/023/1970
- Junior College Index No: J-11.15.004
- Government of Maharashtra and Savitribai Phule Pune University Recognized Minority Institute
- UGC - 2(f) & 12 (B) Status • NAAC Re-accredited College • DST - FIST Funded College



K. B. Hidayatullah Road, Camp,
Pune - 411001. (MS), India



+91-20-2645 4240 / 2644 6319.



principal@poonacollege.edu.in
www.poonacollege.edu.in

Professor (Dr.) Aftab Anwar Shaikh

M.Com, Ph.D (Busi. Admin.)

PRINCIPAL

54.	Ground floor Linguistic Department (Eng. Urdu, Hindi)	735	68.31
55.	Ground floor conference hall	1200	11.54
56.	Ground floor passage	1215.5	12.98
57.	Ground floor stair case main building	216	20.07
58.	Ground floor stair case main building	183.75	17.07
59.	Ground floor Chemistry Laboratory	750	69.71
60.	Ground floor Chemistry Laboratory	193.75	18
61.	Ground floor Chemistry Laboratory physical	817	75.94
62.	Ground floor Chemistry Balance room	510	47.4
63.	Ground floor Chemistry laboratory -1	1200	111.54
64.	Ground floor Chemistry M.Sc Laboratory	693.25	64.43
65.	Ground floor Chemistry Dept.	420	39.03
66.	Ground floor Chemistry MSc Lecture Hall	424.03	39.44
67.	Ground floor Administrative block	1170	108.75
68.	Ground floor Principal's office with reception vice-principal's chambers and toilets	1389.45	129.15
69.	Ground floor Gymkhana Dept.	1076.75	100.08
70.	Ground floor stage	427.5	39.73
71.	Ground floor canteen and staff (boys)	1406	130.68
72.	Ground floor canteen and staff (girls)	448	41.64



1970 - 2020

Anjuman Khairul Islam's

POONA COLLEGE OF ARTS, SCIENCE & COMMERCE

- Affiliated to Savitribai Phule Pune University: ID No PUI/PN/ASC/023/1970
- Junior College Index No: J-11.15.004
- Government of Maharashtra and Savitribai Phule Pune University Recognized Minority Institute
- UGC - 2(f) & 12 (B) Status • NAAC Re-accredited College • DST - FIST Funded College



K. B. Hidayatullah Road, Camp,
Pune - 411001. (MS), India



+91-20-2645 4240 / 2644 6319.



principal@poonacollege.edu.in
www.poonacollege.edu.in

Professor (Dr.) Aftab Anwar Shaikh

M.Com, Ph.D (Busi. Admin.)

PRINCIPAL

Sr. No.	Area Description	Area	
		Sq. ft.	Sq. mtr.
73.	Ground floor cycle/ motor stand	3860	358.78
	Ground floor Computer building		
74.	Ground floor computer –Electronics Lab and Dept.	1741.25	161.85
75.	Ground floor Electronics Dept.	221.12	20.55
76.	Ground floor lecture hall no. 100	305.25	28.37
77.	Ist floor lecture hall	603	56.04
78.	Ist floor lecture hall	579.62	53.87
79.	Ist floor computer maintenance and Electronics lab	784	72.87
80.	Ist floor stair case	212.12	20.55
81.	IInd floor stair case	212.12	20.55
82.	IInd floor MCS Lab and Computer Lab	784	72.87
83.	IInd floor BCS Lab and Computer Dept.	1130	105
84.	M1-Classroom	753.48	70
85.	M2-Classroom	551.1168	51.20
86.	M3-Classroom	764.244	71
87.	M4-Classroom	842.283	78.25
88.	M6-Classroom	540.3528	50.20
89.	M7-Classroom	753.48	70



Anjuman Khairul Islam's

POONA COLLEGE OF ARTS, SCIENCE & COMMERCE

- Affiliated to Savitribai Phule Pune University: ID No PU/PN/ASC/023/1970
- Junior College Index No: J-11.15.004
- Government of Maharashtra and Savitribai Phule Pune University Recognized Minority Institute
- UGC - 2(f) & 12 (B) Status • NAAC Re-accredited College • DST - FIST Funded College



K. B. Hidayatullah Road, Camp,
Pune - 411001, (MS), India



+91-20-2645 4240 / 2644 6319.



principal@poonacollege.edu.in
www.poonacollege.edu.in

Professor (Dr.) Aftab Anwar Shaikh

M.Com, Ph.D (Busi. Admin.)

PRINCIPAL

90.	Ground floor Trustee office	181.44	16.86
91.	Ground floor IEDC department	114.84	10.67
92.	Ground floor canteen – Rest room	132.31	12.29
93.	Ground floor canteen- Washroom	32.88	3.05
94.	Ground floor canteen extended for boy students	435.69	40.48
95.	Ground floor Boys toilet	375.84	34.92
96.	First floor Girls toilet	375.84	34.92
97.	Ground floor Chemistry M.Sc lab	569.79	52.94
98.	Ground floor Chemistry guest room	127.53	11.85
99.	Ground floor Chemistry new room	171.6	15.94
100.	First floor CEO office	181.44	16.86



Principal

Principal
AKI'S Poona College of Arts,
Science & Commerce
Camp, Pune.